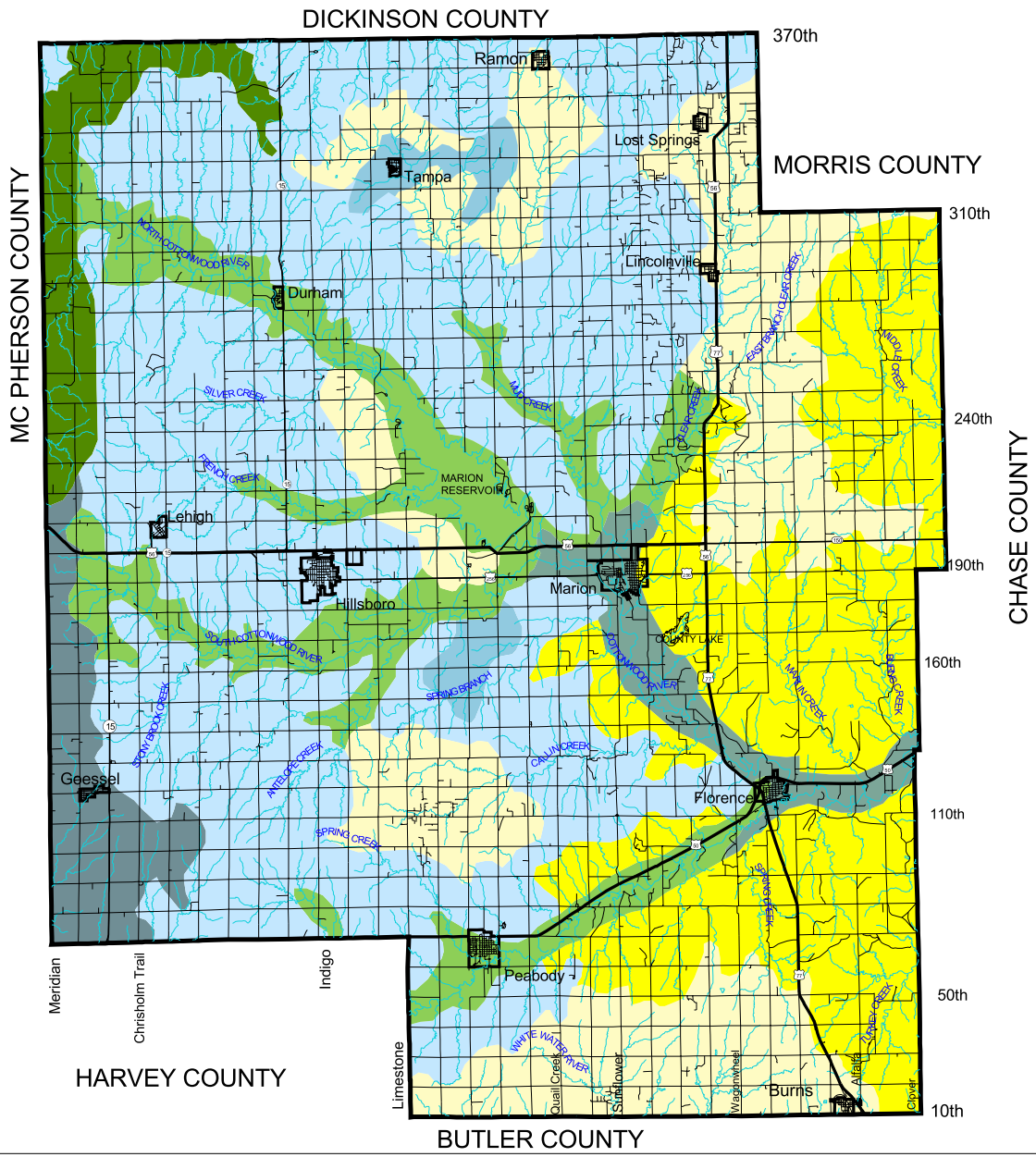


# COMPREHENSIVE PLAN MARION COUNTY, KANSAS

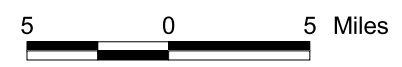
## GENERAL SOIL MAP



**LEGEND (SOILS)**

	1	IRWIN-LADYSMITH ASSOCIATION: Deep nearly level to moderately sloping, well drained and somewhat poorly drained soils that have a clayey subsoil; on uplands.
	2	LABELTTE-TULLY-SOQN ASSOCIATION: Deep to shallow, nearly level to strongly sloping, well drained and somewhat excessively drained soils that have a clayey or silty subsoil; on uplands.
	3	VERDIGRIS-CHASE-READING ASSOCIATION: Deep nearly level, moderately well drained, somewhat poorly drained and well drained soils that have a silty or clayey subsoil; on flood plains and stream terraces.
	4	WELLS-VERDIGRIS ASSOCIATION: Deep nearly level to moderately sloping, well drained and moderately well drained soils that have a loamy or silty subsoil; on uplands and flood plains.
	5	LADYSMITH-GOESSEL ASSOCIATION: Deep nearly, somewhat poorly drained and moderately well drained soils that have a clayey subsoil; on uplands.
	6	LANCASTER-HEDVILLE ASSOCIATION: Moderately deep and shallow, gently sloping to strongly sloping, well drained and somewhat excessively drained soils that have a loamy subsoil; on uplands.
	7	IRWIN-CLIME ASSOCIATION: Deep and moderate deep, gently sloping to moderately steep, moderately well drained soils that have a clayey or silty subsoil; on uplands.
	8	GOESSEL-ROSEHILL ASSOCIATION: Deep and moderate deep, nearly level and gently sloping, moderately well drained soils that have a clayey subsoil; on uplands.

MAP DATA DISCLAIMER: Road lines, Railway lines and related data have been established from the Kansas Data Support and Access Center. Soils information has been digitized from the 1983 GENERAL SOIL MAP of Marion County, Kansas, published by the U.S. Department of Agriculture Soil Conservation Service. Any inaccuracies in information incorporated in this map are unintentional.



**BUCHER, WILLIS & RATLIFF**  
CORPORATION

7920 WARD PARKWAY, KANSAS CITY, MISSOURI 64134  
BWR 2000309 (816)363-2696 SUMMER 2003