

SERICEA LESPEDEZA CONTROL

(Control means preventing the production of viable seed.)

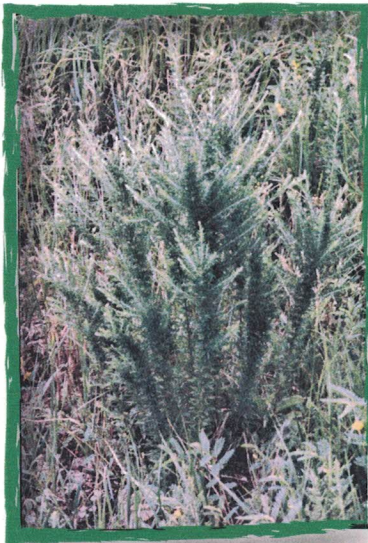
MECHANICAL:

Mowing in the late bud stage for 2 - 3 consecutive years from mid-July to late summer should reduce the vigor of the stand.

Burning at the proper time (late spring) followed by intensive early stocking (double stock until July 15th and then remove the cattle) may reduce the occurrence.

Grazing infested areas with sheep and goats will provide effective control of sericea lespedeza.

Tame pastures - Proper fertilization and grazing during April and May may reduce the occurrence. Late grazing or no grazing will increase sericea lespedeza.



HERBICIDES:

Spring & Summer Treatments

1 -2 pts Remedy per acre

2 pts Garlon per acre

32 oz PastureGard per acre

Early Bud & Fall Treatments

1 -1 ½ oz Escort per acre

BIOLOGICAL:

There are no biological controls approved for sericea lespedeza at this time.

****Rates may vary by region. Always read and follow label directions. Contact your local county weed director for additional information.***

