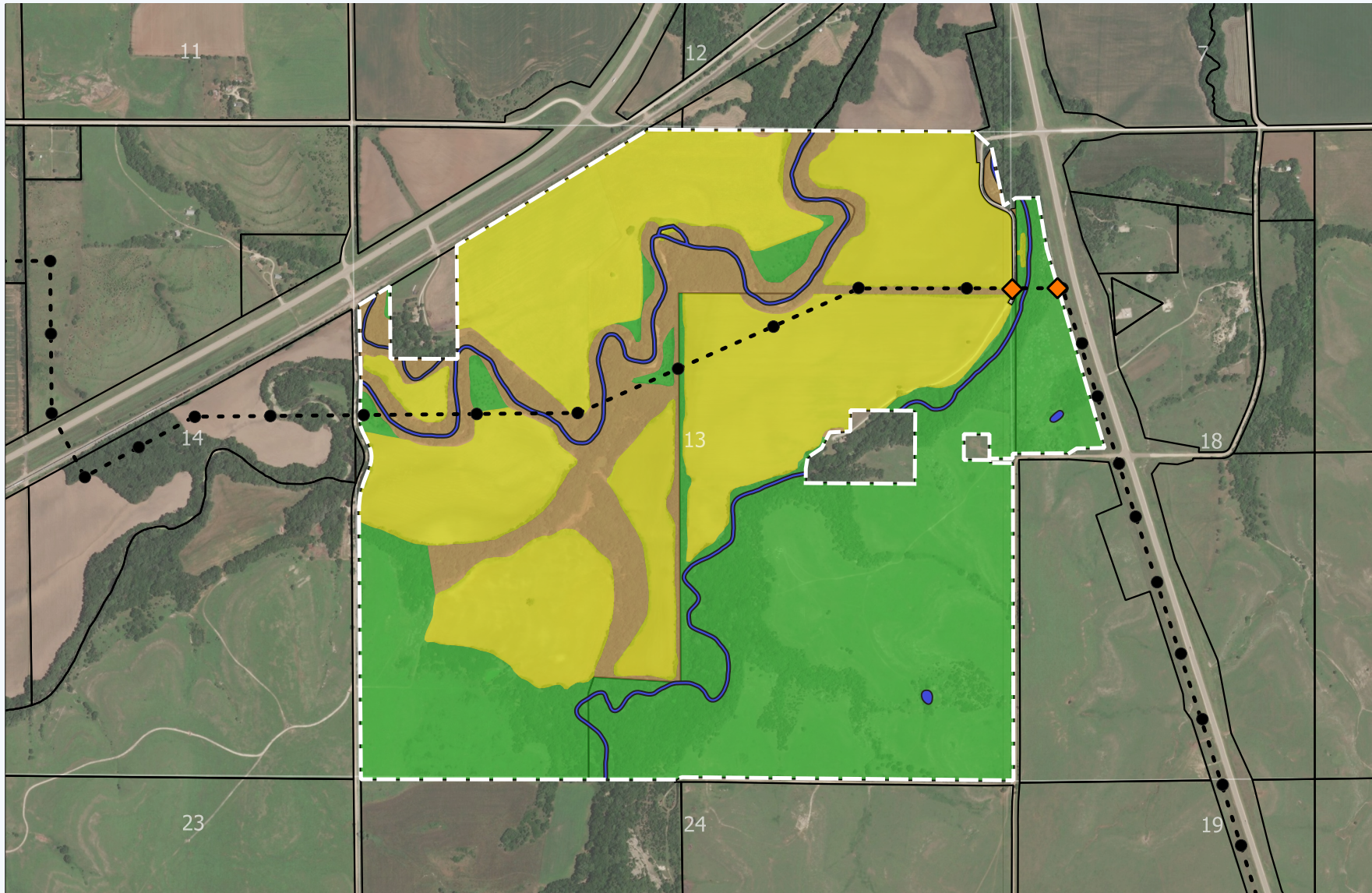


Expedition Wind

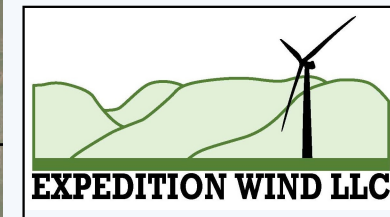


Legend

- Transmission Route
- Transmission Pole Locations
- ◆ Transmission Access Points
- Development Area
- County Sections

Land Use

- Dry Crop
- Native Grass
- Wooded
- Wetlands



Conditional Use Permit Site Plan

Date: 9/25/2019
 Development Company: National Renewable Solutions
 Drafted by: Blake Johnson
 Coordinate System: WGS84 UTM 14N (EPSG:32614)

Location: Marion County, KS
 Description: Parts of Section 13, Township 21 South, Range 21 East AND Parts of Section 18, Township 21 South, Range 5 East



National Renewable Solutions, LLC
 1907 Wayzata Blvd, Suite 220
 Wayzata, MN 55391
 952-473-7500
www.natrs.com