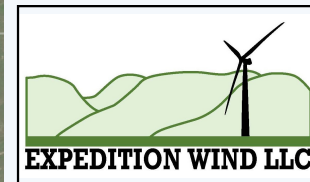
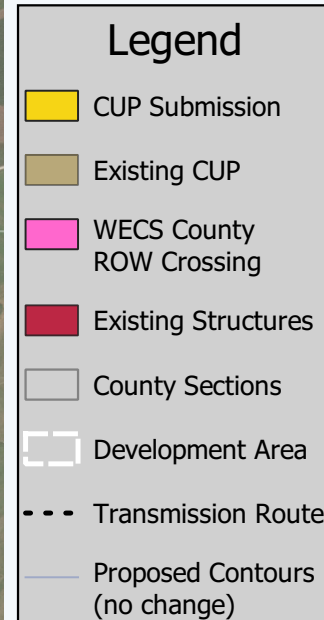
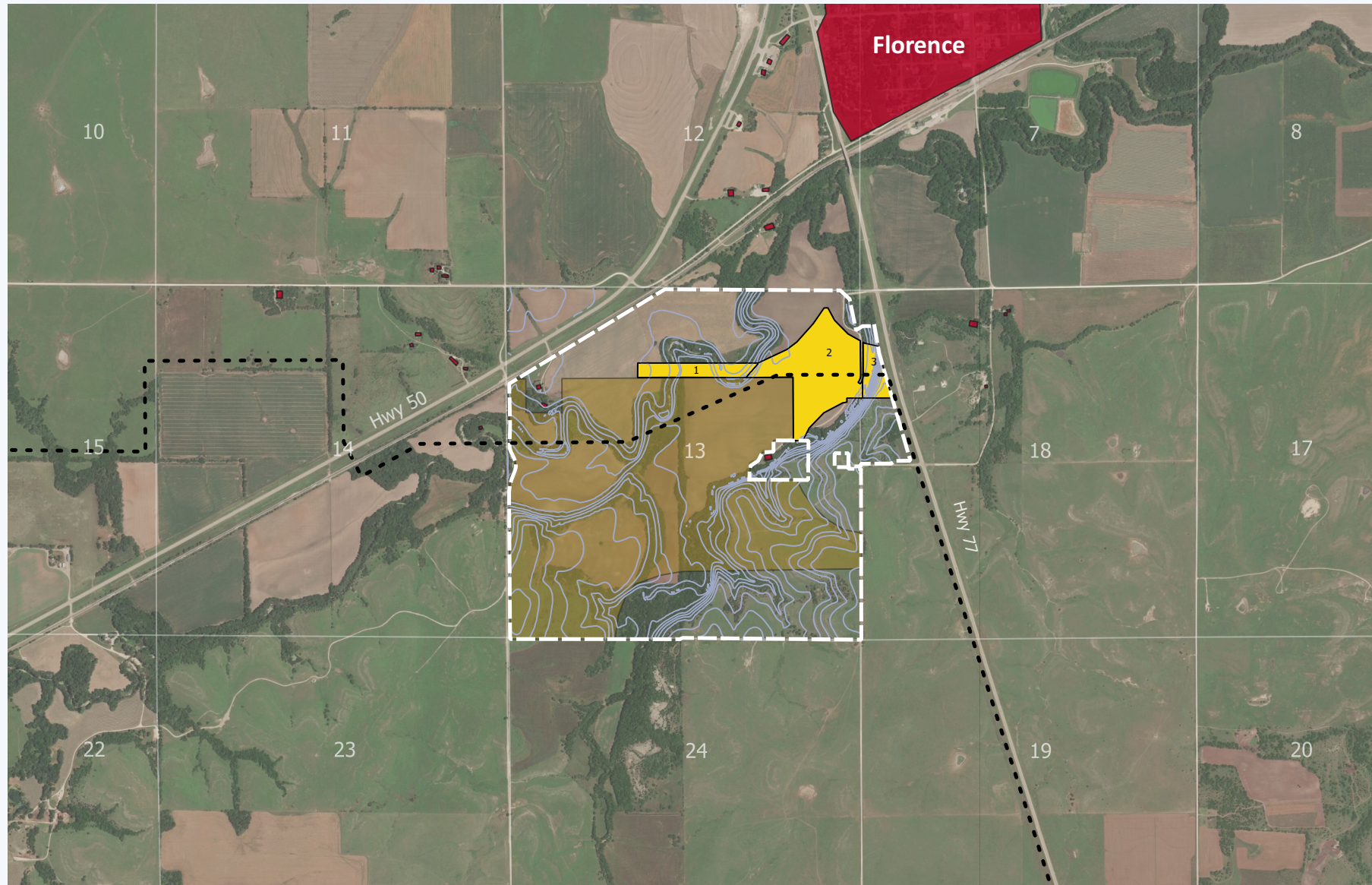


# Expedition Wind



## Conditional Use Permit Site Plan

Date: 9/25/2019  
 Development Company: Expedition Wind, LLC  
 Drafted by: Blake Johnson  
 Coordinate System: WGS84 UTM 14N (EPSG:32614)

Location: Marion County, Kansas  
 Description: Parts of Section 13, Township 21 South, Range 4 East AND Parts of Section 18, Township 21 South, Range 4 East



National Renewable Solutions, LLC  
 1907 Wayzata Blvd, Suite 220  
 Wayzata, MN 55391  
 952-473-7500  
[www.natrs.com](http://www.natrs.com)