

EXPEDITION WIND

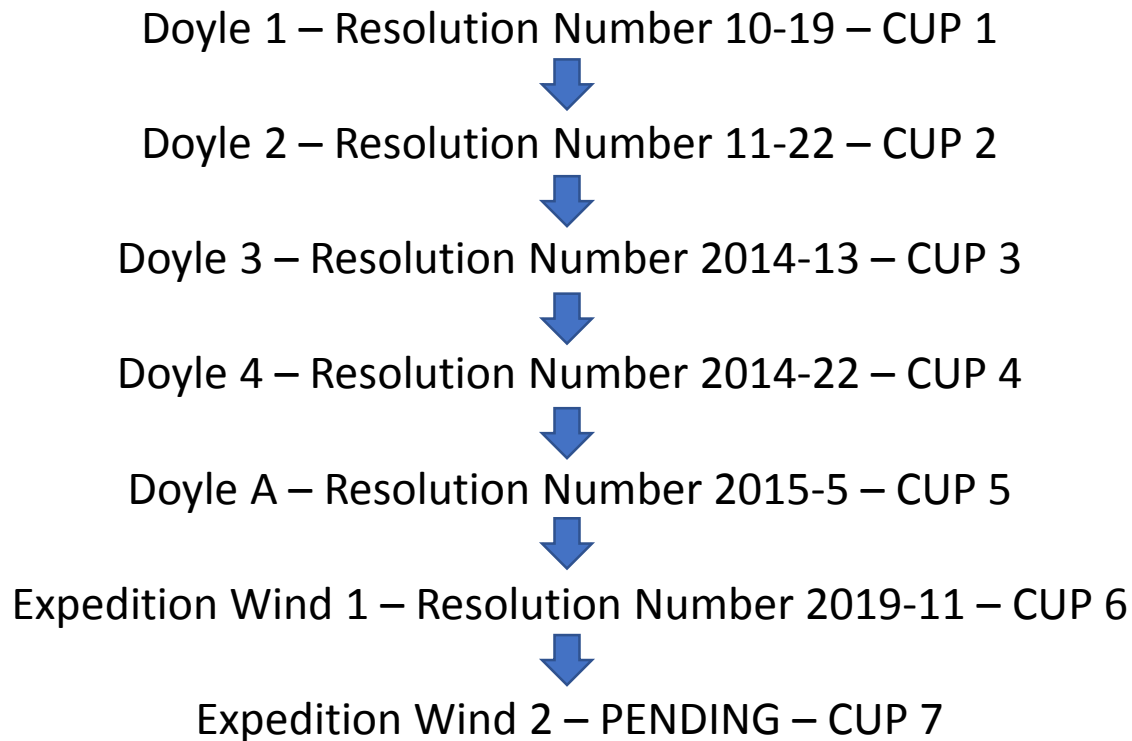
Marion County Planning & Zoning Public Hearing for Conditional Use Permit Case No. PC-19-04

October 24, 2019



CUP History

- The Doyle and Expedition CUP's (6 total) have been established and of record beginning in 2010 through 2019.



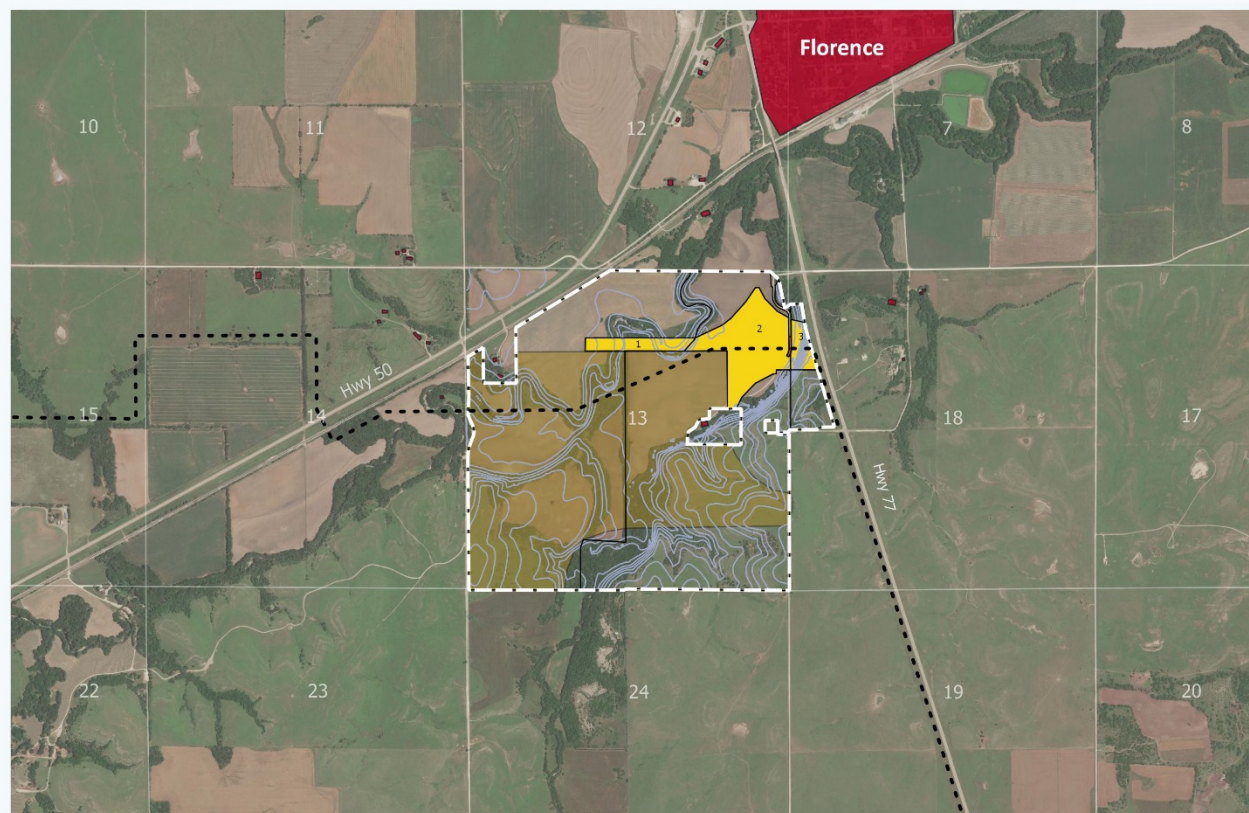
EXW Has An Executed PPA



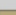
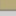


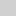



- Expedition has a fully signed, 20-year agreement to sell 100% of the power from this project.
- Offtaker is *an investment grade large investor owned utility*
- Terms of agreement remain subject to Confidentiality Agreement with utility.

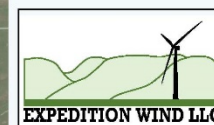
EXW – CUP Site Plan

Expedition Wind



Legend

-  CUP Submission
-  Existing CUP
-  WECS County ROW Crossing
-  Existing Structures
-  County Sections
-  Development Area
-  Transmission Route
-  Proposed Contours (no change)



Conditional Use Permit Site Plan

Date: 9/25/2019
Development Company: Expedition Wind, LLC
Drafted by: Blake Johnson
Coordinate System: WGS84 UTM 14N (EPSG:32614)

Location: Marion County, Kansas
Description: Parts of Section 13, Township 21 South, Range 4 East AND Parts of Section 18, Township 21 South, Range 4 East



National Renewable Solutions, LLC
1907 Wayzata Blvd, Suite 220
Wayzata, MN 55391
952-473-7500
www.natrs.com

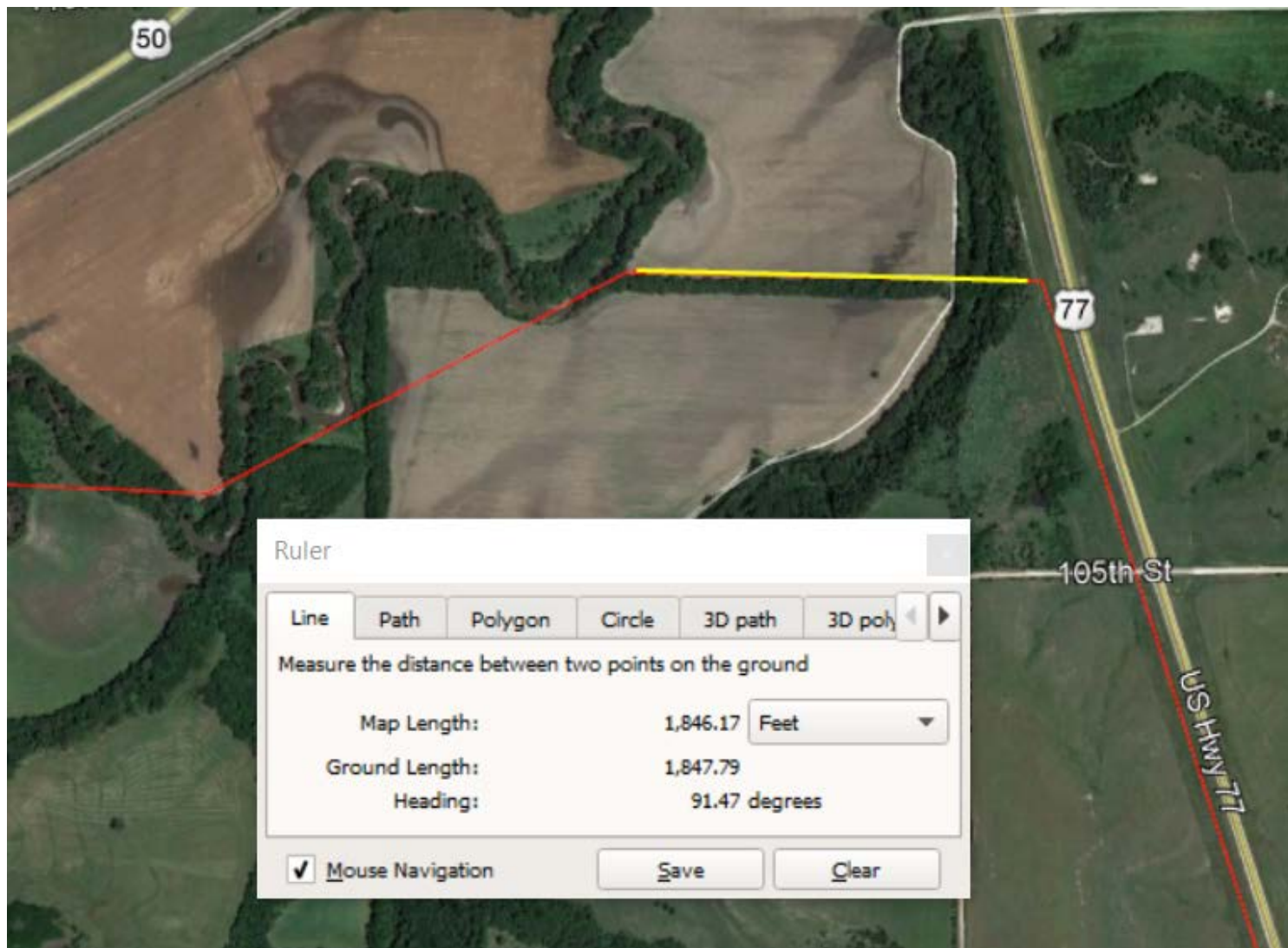
(subject to final design and conditions)



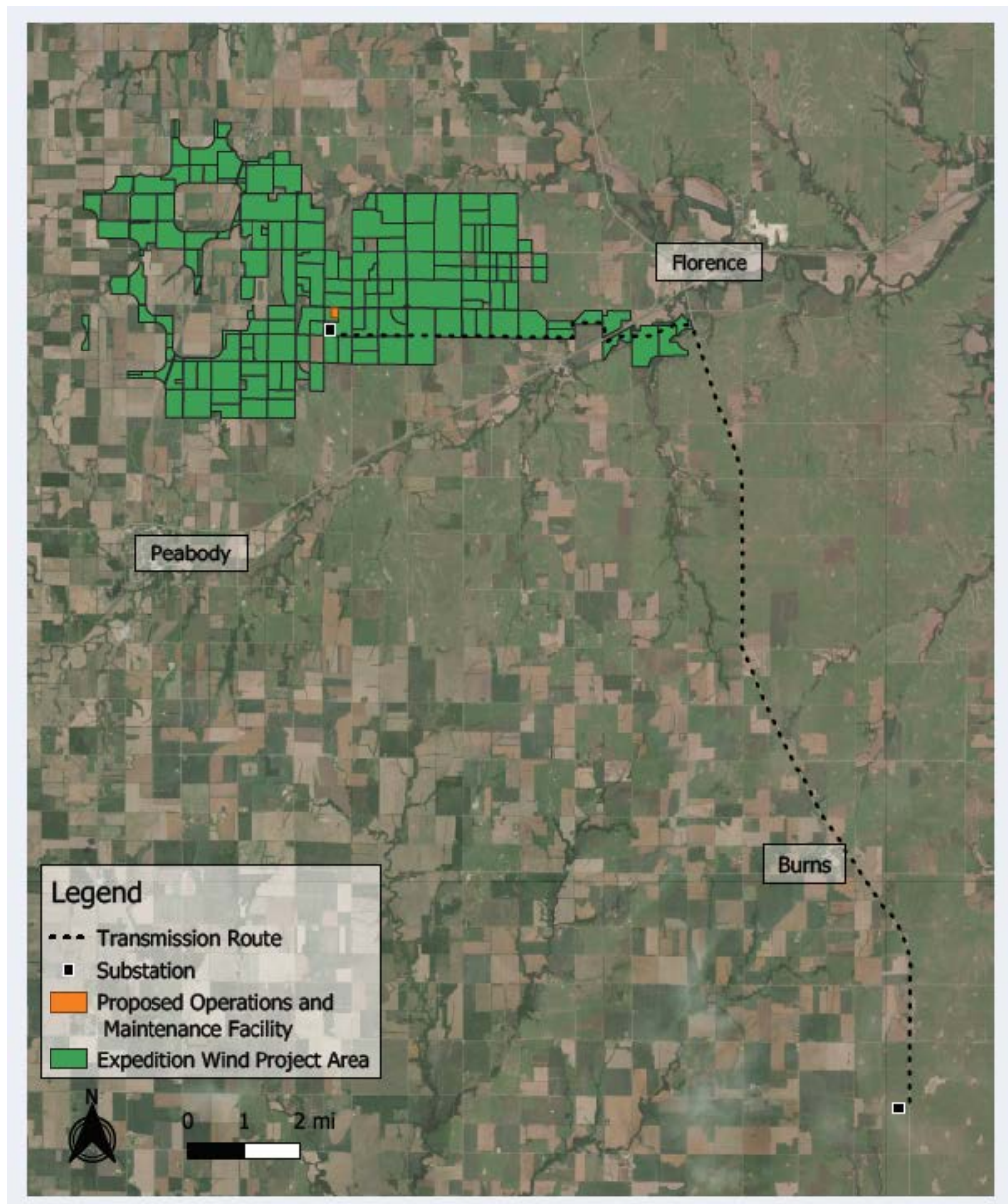
EXPEDITION WIND – MARION COUNTY, KANSAS



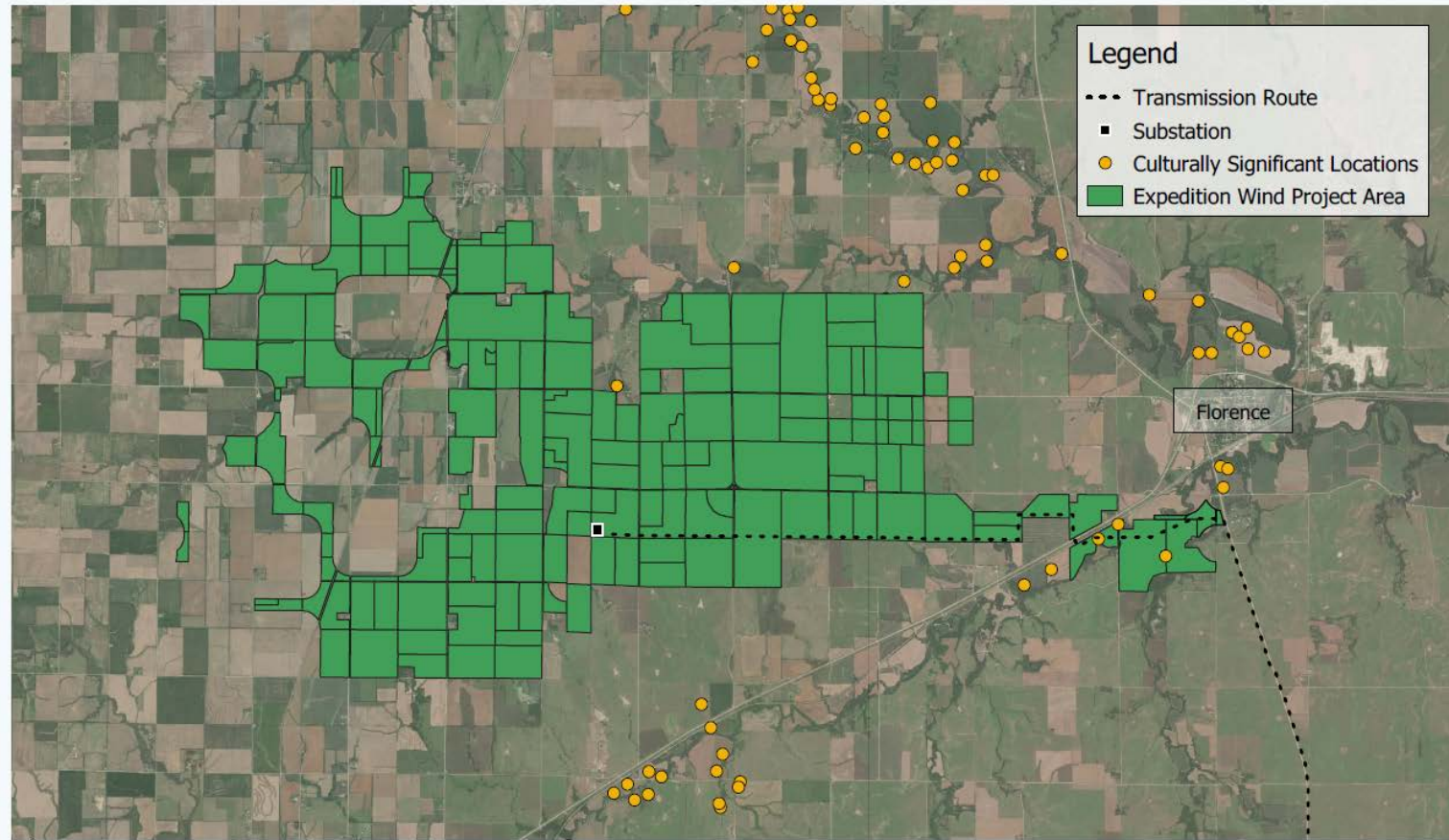
EXW – CUP Line Distance



Transmission Line Route



EXW – Culturally Significant Locations



Culturally Significant Locations

Date: 9/19/2019
Project Company: Expedition Wind
Drafted by: Blake Johnson
Coordinate System: WGS84 UTM 14N (EPSG:32614)

Location: Marion County, KS
Description: Southern Marion



National Renewable Solutions, LLC
1907 Wayzata Blvd, Suite 220
Wayzata, MN 55391
952-473-7500
www.natrs.com

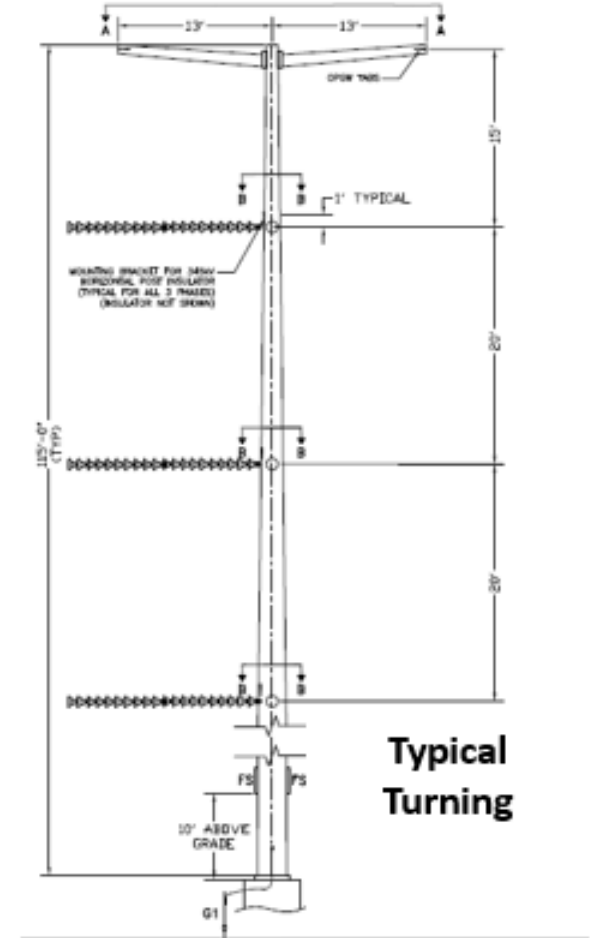
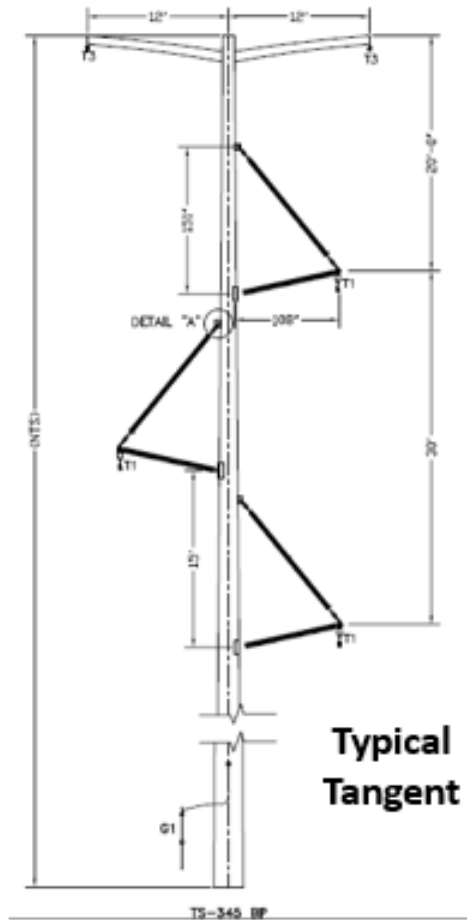
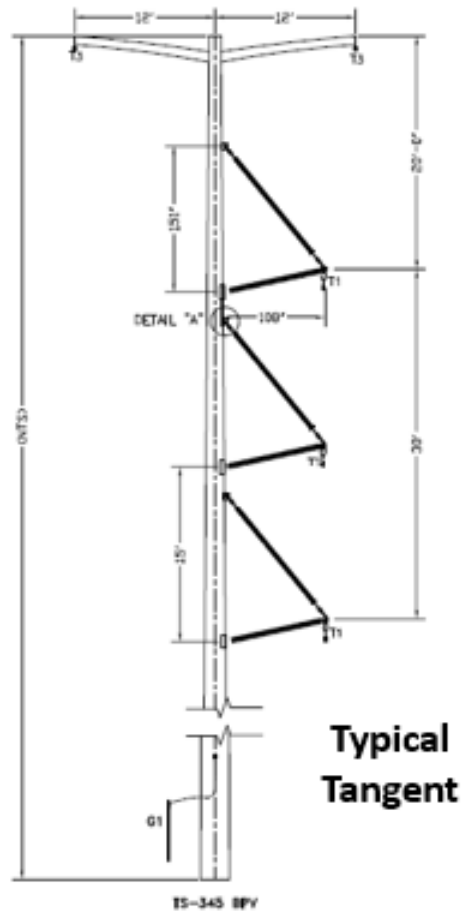
(route subject to final design and conditions)



EXPEDITION WIND – MARION COUNTY, KANSAS



EXW Sample Gen-Tie Structures

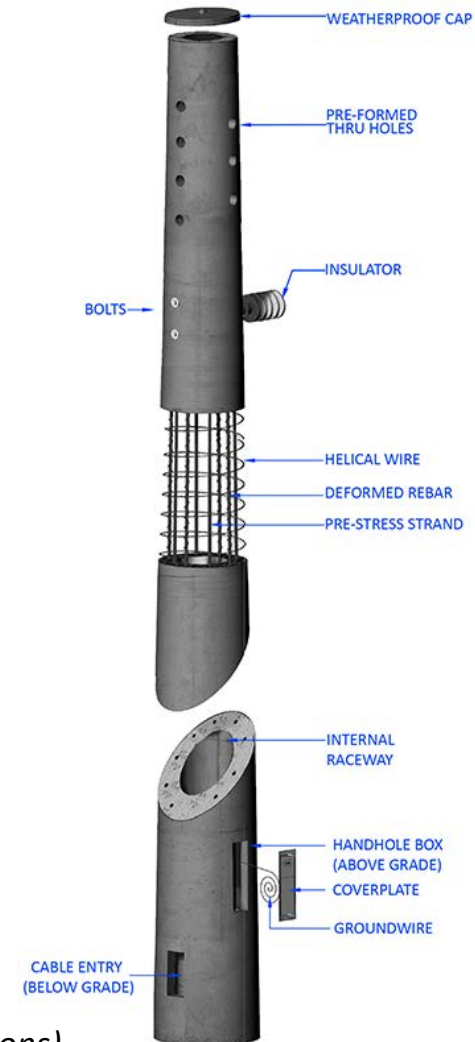


(subject to final design and conditions)

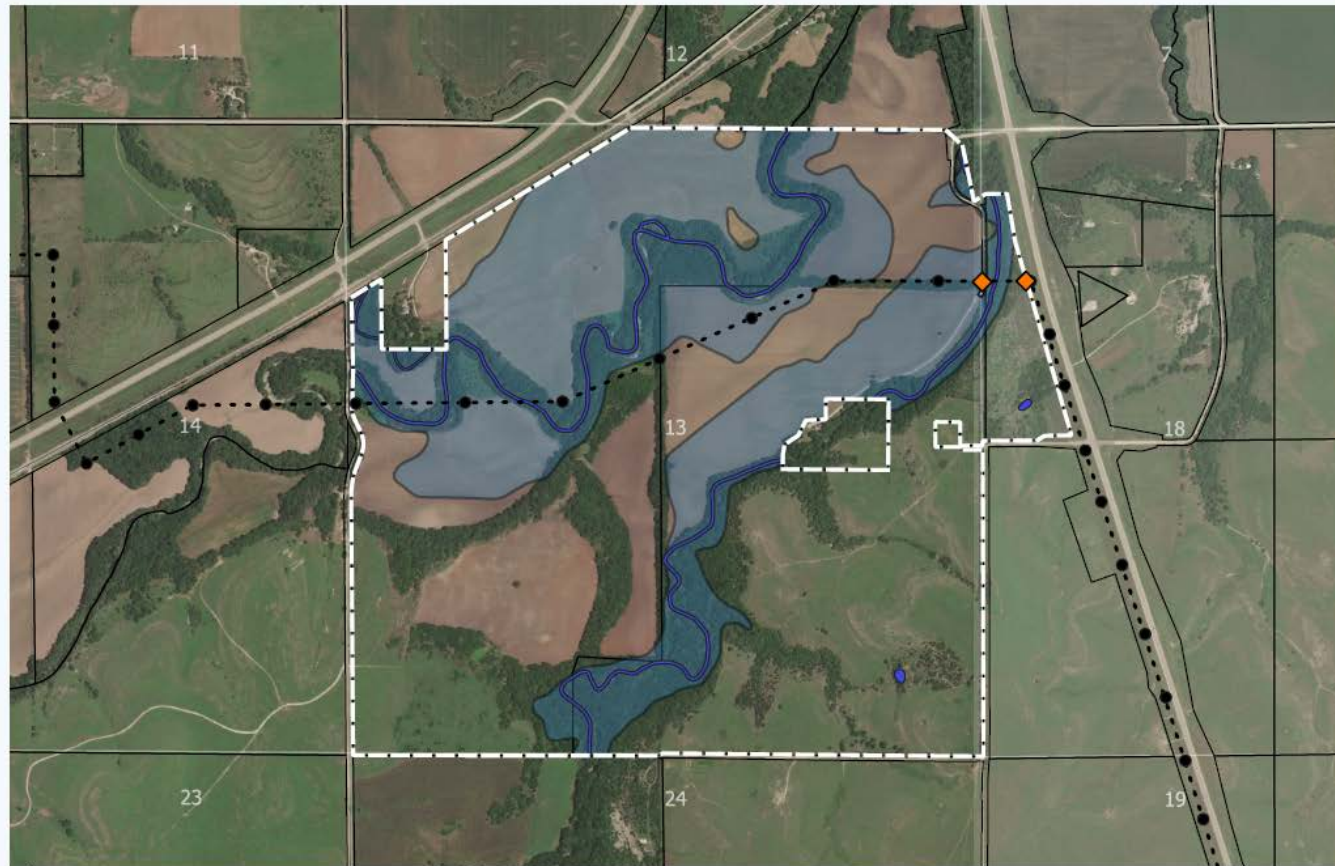
EXW – Pole Example



(subject to final design and conditions)



EXW CUP Flood Plain Map



Legend

- Transmission Route
- Transmission Pole Locations
- ◆ Transmission Access Points
- Development Area
- County Sections
- Blue Wetlands
- Light Blue 100 yr Flood Plain



Conditional Use Permit Site Plan

Date: 9/25/2019
Development Company: National Renewable Solutions
Drafted by: Blake Johnson
Coordinate System: WGS84 UTM 14N (EPSG:32614)

Location: Marion County, KS
Description: Parts of Section 13, Township 21 South, Range 21 East AND Parts of Section 18, Township 21 South, Range 5 East



National Renewable Solutions, LLC
1907 Wayzata Blvd, Suite 220
Wayzata, MN 55391
952-473-7500
www.natrs.com

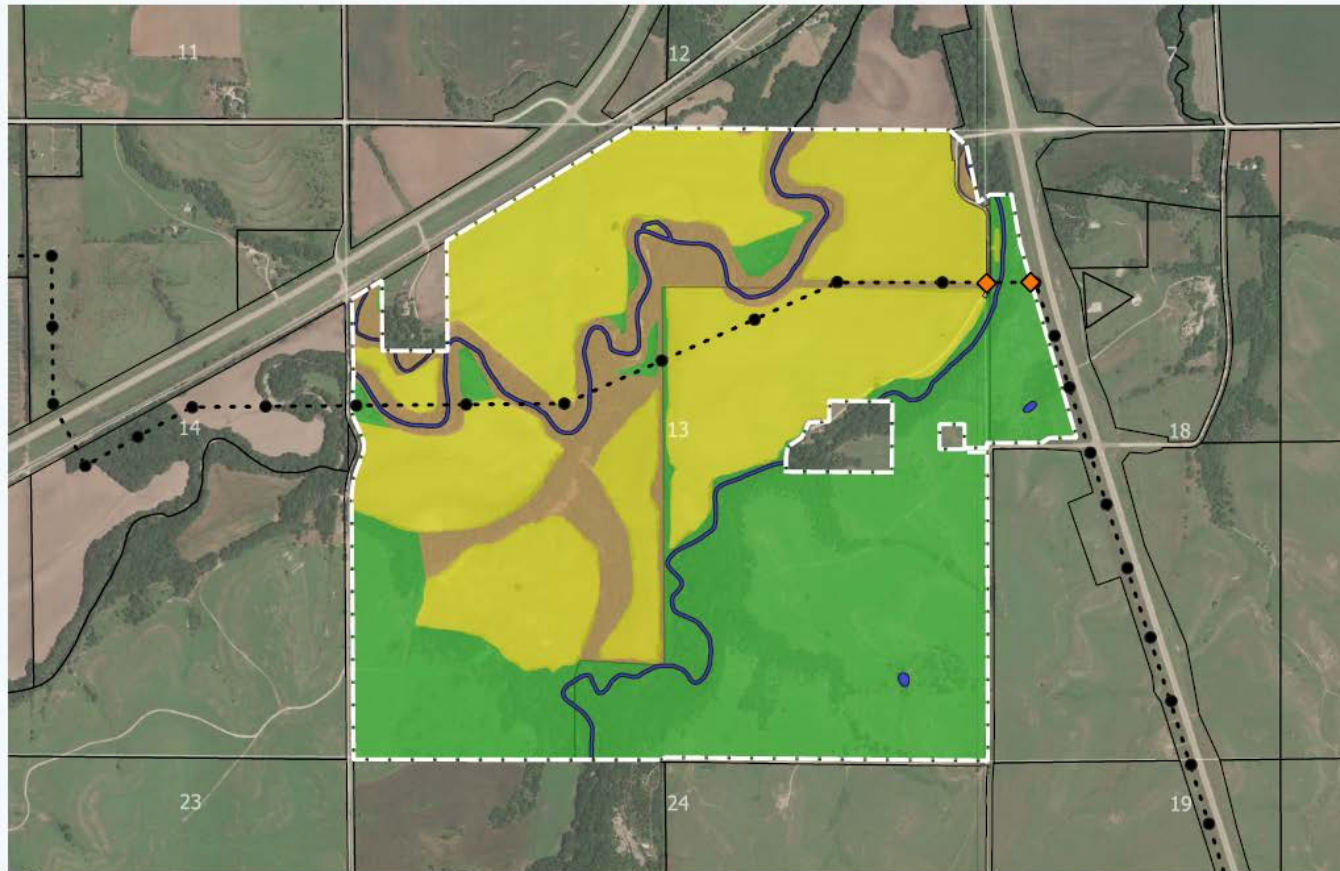
(subject to final design and conditions)



EXPEDITION WIND – MARION COUNTY, KANSAS



EXW CUP Land Use Map



Legend

- Transmission Route
- Transmission Pole Locations
- ◆ Transmission Access Points
- Development Area
- County Sections
- Land Use
 - Dry Crop
 - Native Grass
 - Wooded
 - Wetlands



Conditional Use Permit Site Plan

Date: 9/25/2019
 Development Company: National Renewable Solutions
 Drafted by: Blake Johnson
 Coordinate System: WGS84 UTM 14N (EPSG:32614)

Location: Marion County, KS
 Description: Parts of Section 13, Township 21 South, Range 21 East AND Parts of Section 18, Township 21 South, Range 5 East



National Renewable Solutions, LLC
 1907 Wayzata Blvd, Suite 220
 Wayzata, MN 55391
 952-473-7500
www.natrs.com

(subject to final design and conditions)

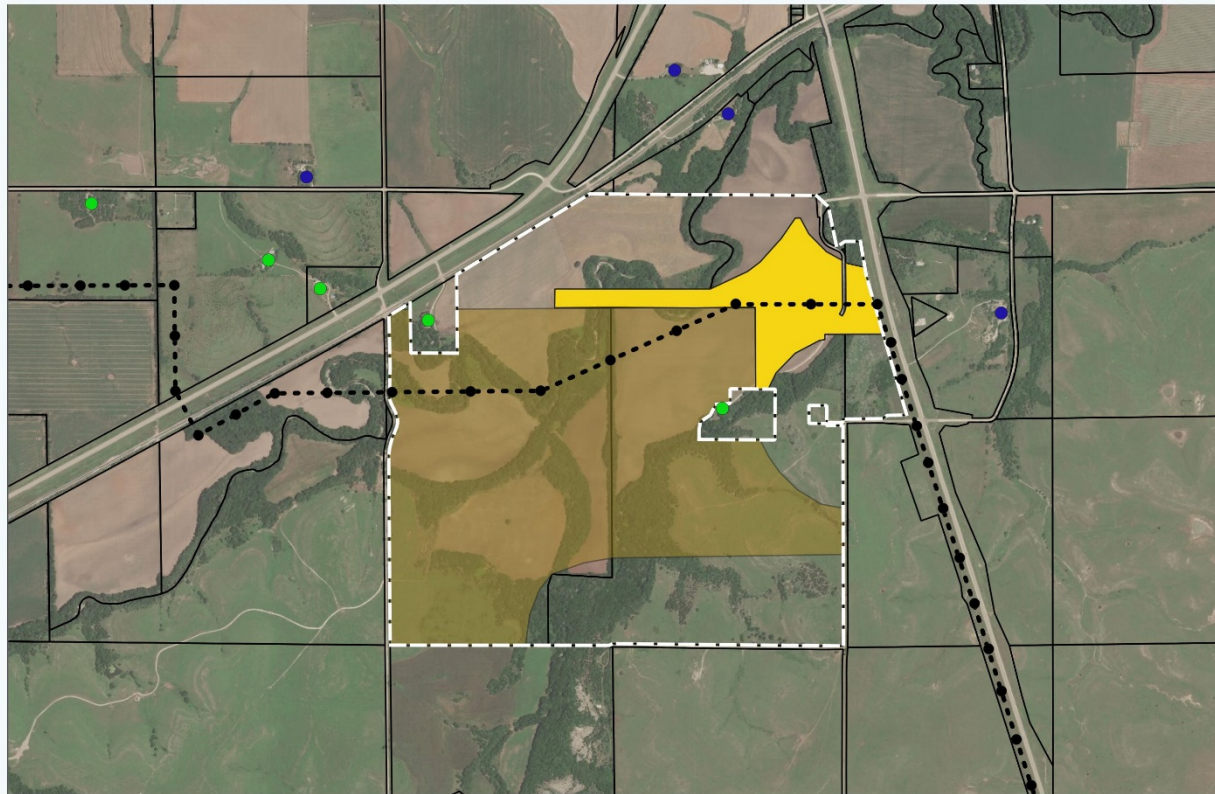


EXPEDITION WIND – MARION COUNTY, KANSAS



Surrounding Home Locations

Expedition Wind



Legend

- Participating Home
- Non-participating Home
- - - Transmission Route
- Transmission Pole Locations
- CUP Submission
- Existing CUP
- - - Development Area
- County Parcels



Surrounding Home Locations

Date: 10/15/2019
Development Company: National Renewable Solutions
Drafted by: Blake Johnson
Coordinate System: WGS84 UTM 14N (EPSG:32614)

Location: Marion County, KS
Description: Parts of Section 13, Township 21 South, Range 21 East AND Parts of Section 18, Township 21 South, Range 5 East



National Renewable Solutions, LLC
1907 Wayzata Blvd, Suite 220
Wayzata, MN 55391
952-473-7500
www.natrs.com

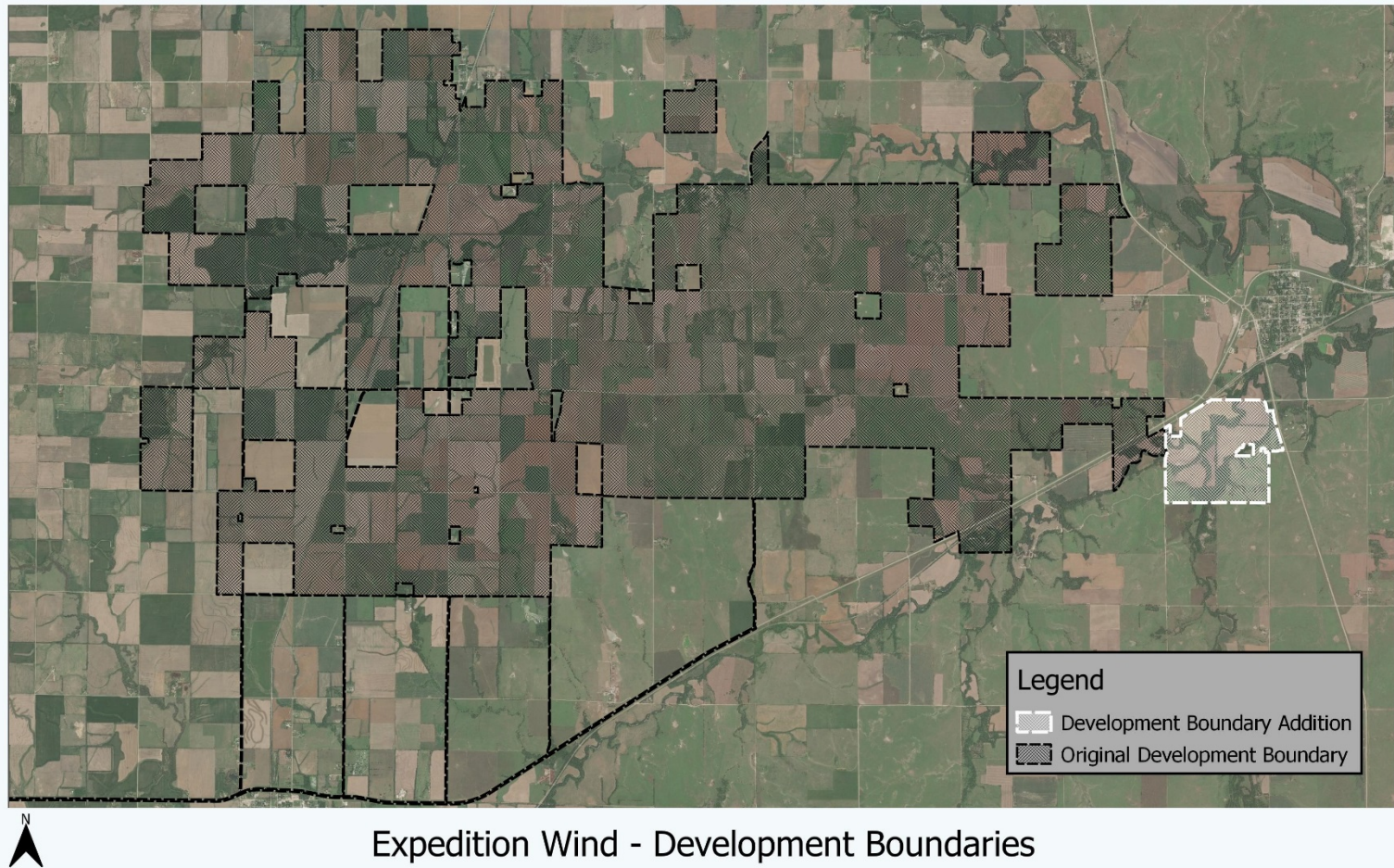
(subject to final design and conditions)



EXPEDITION WIND – MARION COUNTY, KANSAS



Development Boundary Addition



Date: 10/21/2019

Development Company: National Renewable Solutions

Drafted by: Blake Johnson

Coordinate System: WGS84 / Pseudo-Mercator

Location: Southern Marion County
State: Kansas



National Renewable Solutions, LLC
1907 Wayzata Blvd, Suite 220
Wayzata, MN 55391
952-473-7500
www.natrs.com

(subject to final County Approval)



EXPEDITION WIND – MARION COUNTY, KANSAS



Thank you

NRS and Ares Team

Patrick Pelstring
Jesse Hopkins-Hoel
Lindsey Ransom
Sean McMullen
Steven Porto

Troy Bushman
Ty Severson
Blake Johnson
David Rinder
Mark Russell

Expert Study Participants

Eric Hansen, Westwood Professional Services (Present)
Dylan Fehl, Foulston Siefkin, LLP (Present)
Dr. Preston Gilson, Fort Hays State University

