

**Route of Santa Fe Trail
In Marion County, Kansas
August 2010**
(Trail is located where
indicated by shaded boxes)

Twp	Rng	Sec	NW/4	NE/4	SW/4	SE/4
19S	1E	3				
		4				
		8				
		9				
		17				
		18				
		19				
18S	1E	24				
		25				
		26				
		34				
		35				
18S	2E	5				
		7				
		8				
		18				
		19				
17S	2E	24				
		25				
		29				
		29				
		29				
		32				
		33				
17S	3E	19				
		20				
		21				
		22				
		23				
		24				
		25				
		30				
17S	4E	11				
		12				
		14				
		16				
		16				
		17				
		19				
		20				
		21				
		22				
		29				
		30				

**Route of Santa Fe Trail
Marion County, Kansas
August 2010**
Coordinates where Trail Crosses County Roads

Ref. No.	Latitude		Longitude	
	Degrees	Minutes	Degrees	Minutes
1	38	23 190	N	97
2	38	23 489	N	97
3	38	23 742	N	97
4	38	24 372	N	97
5	38	25 133	N	97
6	38	25 251	N	97
7	38	25 674	N	97
8	38	25 861	N	97
9	38	26 104	N	97
10	38	26 500	N	97
11	38	28 342	N	97
12	38	28 717	N	97
13	38	29 582	N	97
14	38	29 531	N	97
15	38	29 585	N	97
16	38	29 598	N	97
17	38	29 534	N	97
18	38	30 461	N	97
19	38	31 338	N	97
19a	38	31 883	N	97
20	38	32 200	N	97
21	38	32 291	N	97
22	38	32 740	N	97
23	38	33 095	N	97
24	38	33 135	N	97
25	38	33 319	N	97
26	38	33 460	N	97
27	38	33 256	N	97
28	38	33 327	N	97
29	38	33 181	N	97
30	38	33 088	N	97
31	38	32 993	N	97
32	38	32 949	N	97
33	38	33 080	N	97
34	38	33 608	N	97
35	38	33 960	N	96
36	38	33 958	N	97
37	38	33 578	N	97
38	38	33 761	N	97
39	38	33 956	N	97
40	38	34 003	N	97
41	38	34 097	N	96
42	38	34 082	N	96
43	38	33 961	N	96
44	38	33 963	N	96
45	38	34 229	N	95
46	38	34 831	N	96
47	38	34 888	N	95

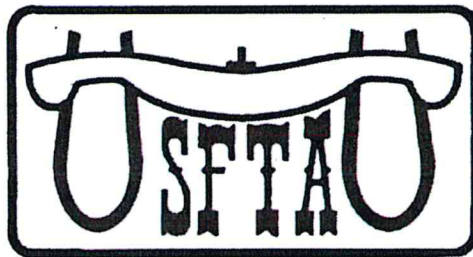
Datum = WGS84
Note: Locations are approximate because the Trail may be several hundred feet wide in some places.

Route of the Santa Fe Trail In Marion County, Kansas

August 2010



**Prepared by:
Cottonwood Crossing Chapter
Santa Fe Trail Association**



**This publication produced with funding
from the National Park Service**

Route of Santa Fe Trail In Marion County, Kansas August 2010

This booklet is provided by the Cottonwood Chapter of the Santa Fe Trail Association, and describes the location of the Santa Fe Trail across Marion County, Kansas.

The Santa Fe Trail was a trail of international, and then national commerce. It was utilized across what is now Marion County from 1821 until 1866. It was utilized for civilian trade and commerce, for military supply and operations, and for transporting the US Mail. The trail played a significant role in the early development of Marion County.

The Santa Fe Trail was designated as a national historic trail by congress in 1987, in accordance with the National Trails System Act. The Santa Fe National Historic Trail is administered by the:

National Park Service
National Trails-Intermountain Region
Aaron Mahr, Superintendent
PO Box 728
1100 Old Santa Fe Trail
Santa Fe, NM 87504
505-988-6098

The Santa Fe Trail Association was formed in 1986 to interpret, preserve, and protect the Santa Fe Trail and to assist the National Park Service in its mission. Contact information for the Santa Fe Trail Association is:

The Santa Fe Trail Association
1349 K-156 Hwy
Larned, KS 67550
620-285-2054
www.santafetrail.org

The Santa Fe Trail Association has established local Chapters which focus on discrete segments of the Santa Fe Trail. For Marion County the local Chapter is:

Cottonwood Crossing Chapter
Santa Fe Trail Association
Atten. Steve Schmidt
1120 Cobblestone Court
McPherson, Kansas 67460
620-245-0715

This booklet is provided as a resource for Federal, State and local agencies in reviewing proposed activities within their jurisdiction. This booklet may also be used by corporations and individuals in evaluating their proposed activities. The Santa Fe Trail is historically significant and should be considered when planning any activities that could negatively impact remaining cultural resources associated with the Santa Fe Trail. In Marion County, those cultural resources generally consist of trail swales or "ruts", and historic signs and markers.

The location of the Santa Fe Trail presented in this booklet is based on the 1857 General Land Office survey, supplemented by on-the-ground observations. The information consists of:

- Four pages of maps, indicating the approximate location of the Santa Fe Trail with respect to county roads, townships, ranges, and sections
- A one page table summarizing the $\frac{1}{4}$ sections crossed by the Santa Fe Trail
- One page listing coordinates where the Santa Fe Trail crosses existing County Roads. (These locations should be considered approximate only, because the width of the trail may vary from a few feet to several hundred feet. Additional location data are available on request.)

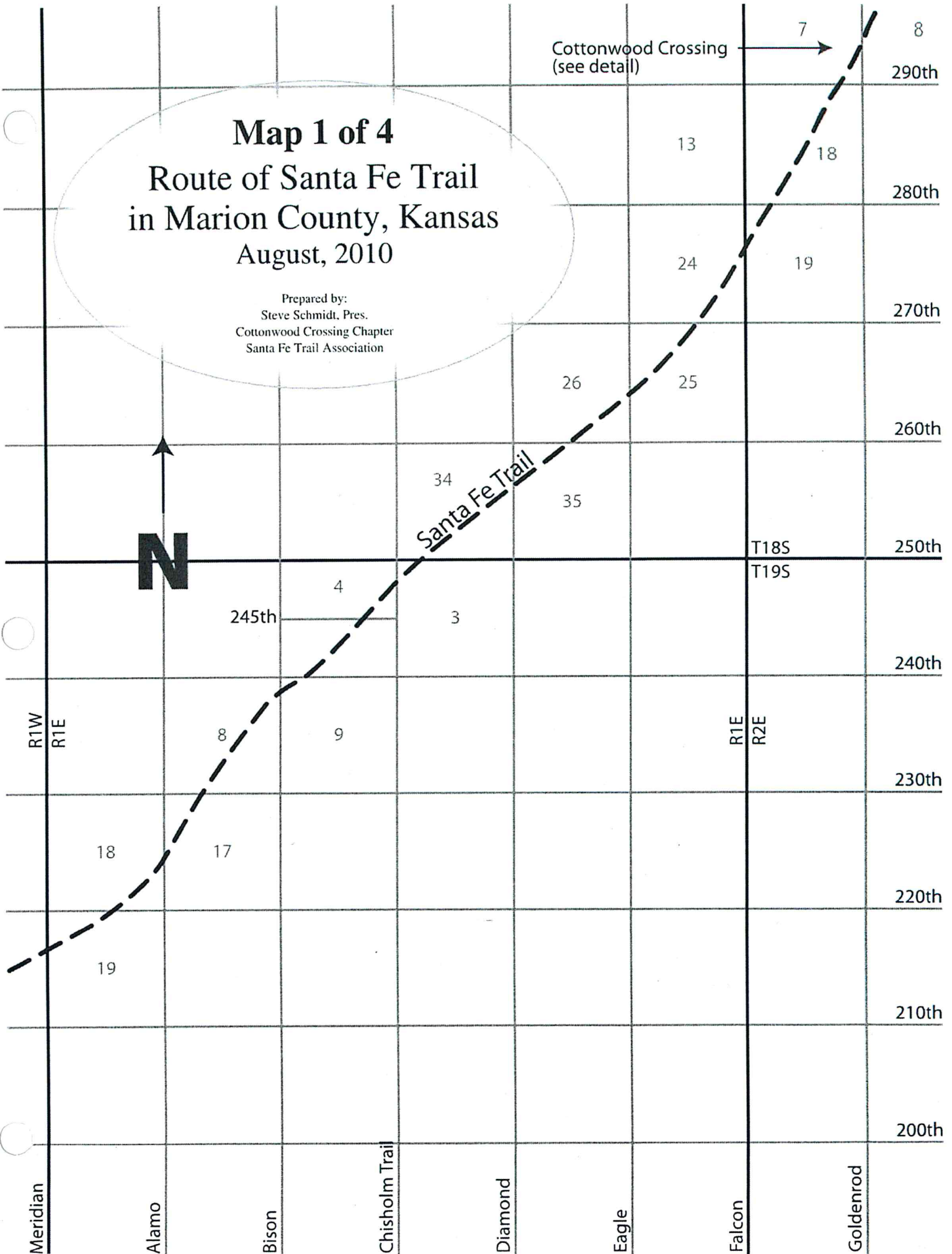
Please consult this booklet to see if any proposed activities will occur on or near the Santa Fe Trail. The Cottonwood Crossing Chapter will be happy to assist in (a) evaluating whether a proposed activity might impact existing Santa Fe Trail cultural resources and (b) offering an opinion as to the significance of any impacts. We hope our insights into the history of the Santa Fe Trail will be of use to you in the planning of your project.

Map 1 of 4

Route of Santa Fe Trail in Marion County, Kansas

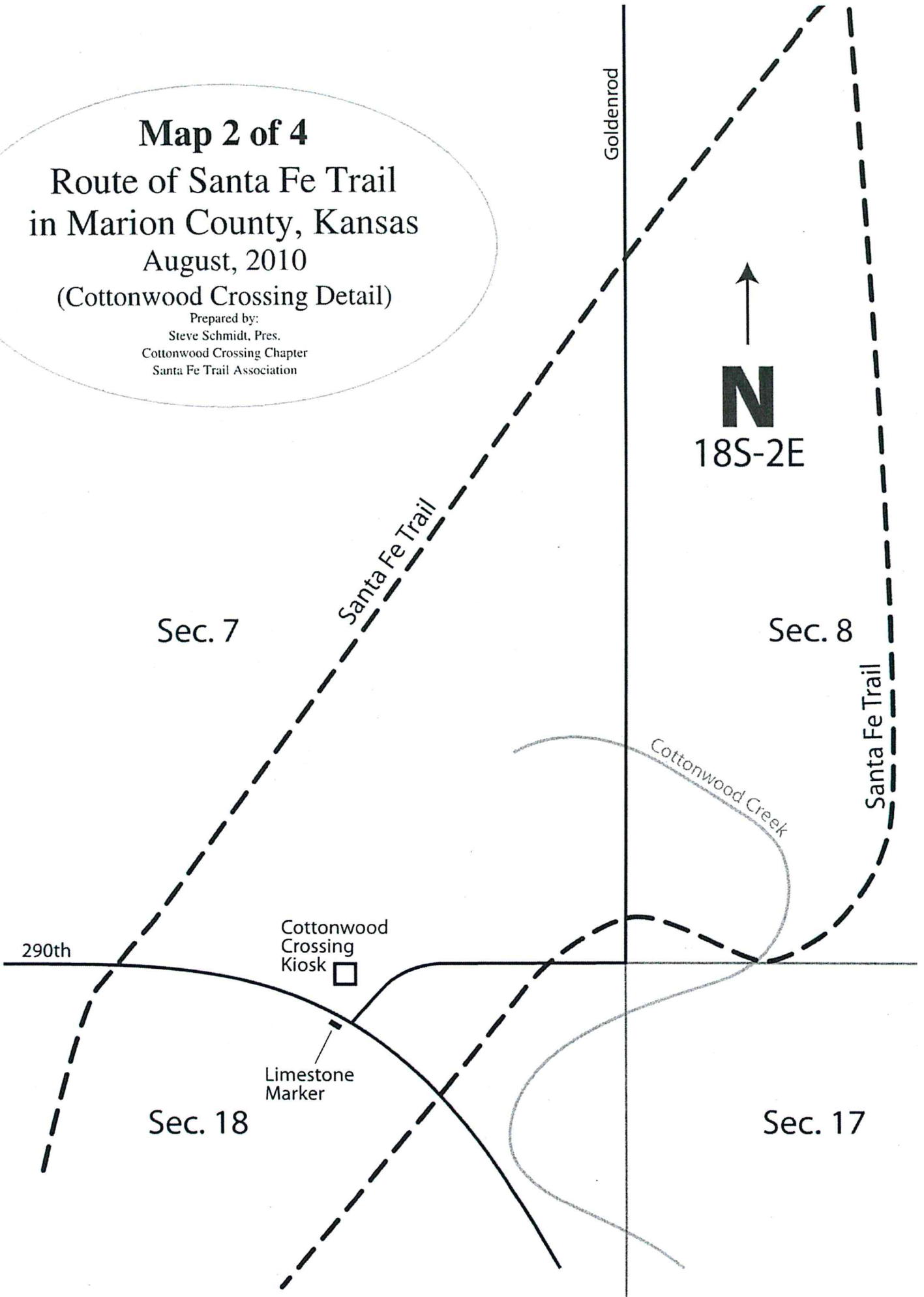
August, 2010

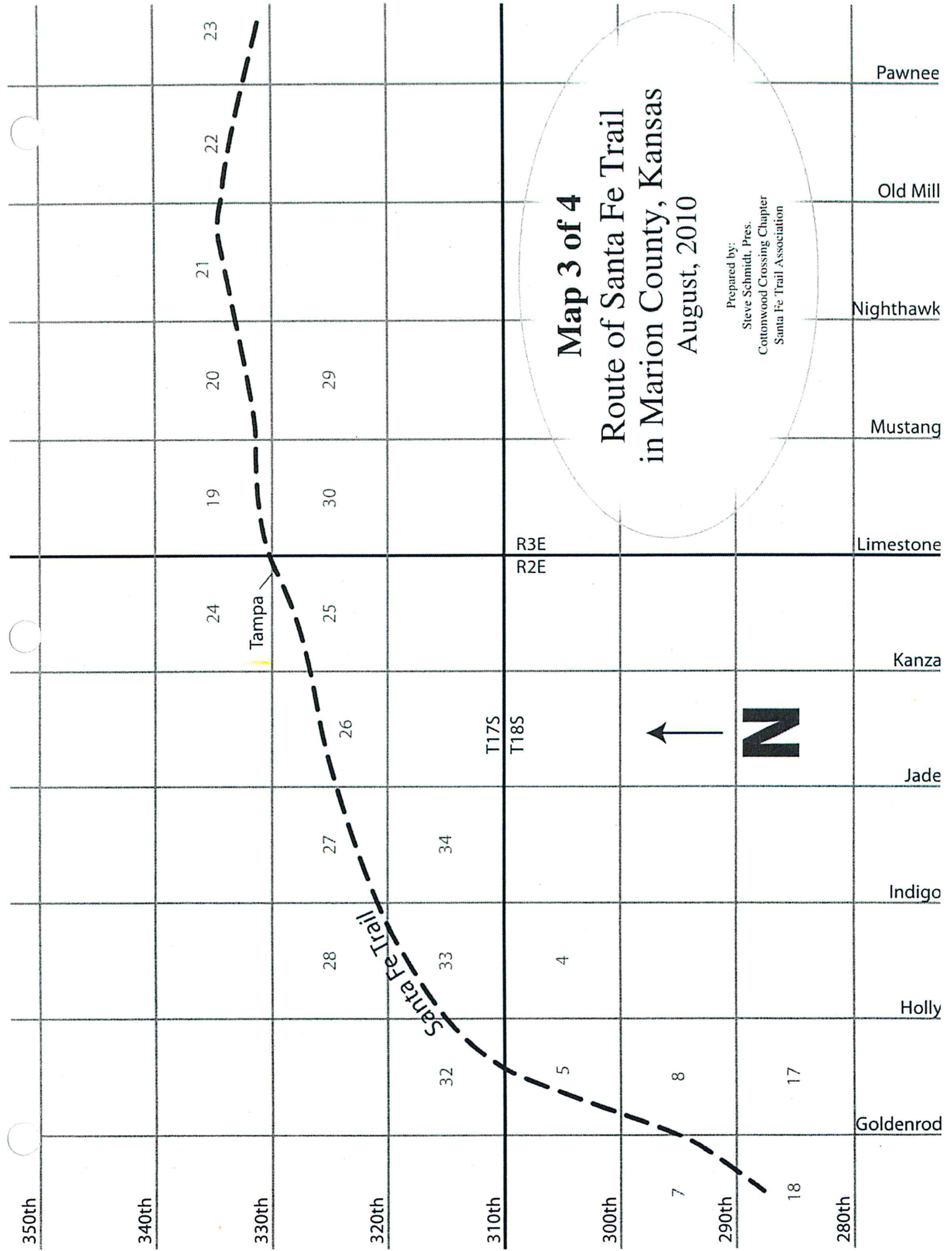
Prepared by:
Steve Schmidt, Pres.
Cottonwood Crossing Chapter
Santa Fe Trail Association



Map 2 of 4
Route of Santa Fe Trail
in Marion County, Kansas
August, 2010
(Cottonwood Crossing Detail)

Prepared by:
Steve Schmidt, Pres.
Cottonwood Crossing Chapter
Santa Fe Trail Association





Map 3 of 4
Route of Santa Fe Trail
in Marion County, Kansas
August, 2010

Prepared by:
 Steve Schmidt, Pres.
 Cottonwood Crossing Chapter
 Santa Fe Trail Association

Pawnee
 Old Mill
 Nighthawk
 Mustang
 Limestone
 Kanza
 Jade
 Indigo
 Holly
 Goldenrod

R3E
 R2E
 T17S
 T18S

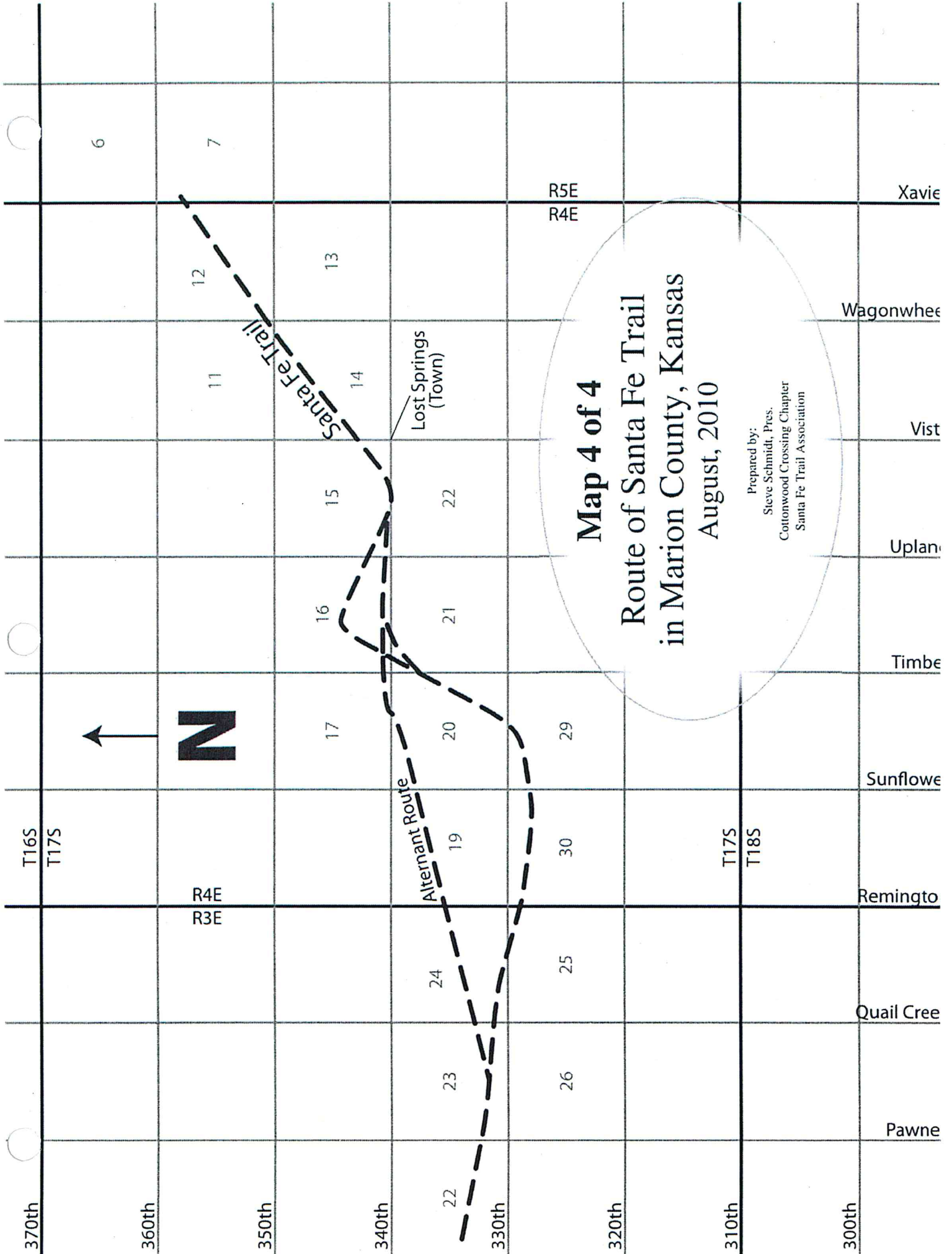


Tampa

Santa Fe Trail

350th
 340th
 330th
 320th
 310th
 300th
 290th
 280th

23
 22
 21
 20
 19
 18
 17
 16
 15
 14
 13
 12
 11
 10
 9
 8
 7
 6
 5
 4
 3
 2
 1



Map 4 of 4
Route of Santa Fe Trail
in Marion County, Kansas
August, 2010

Prepared by:
 Steve Schmidt, Pres.
 Cottonwood Crossing Chapter
 Santa Fe Trail Association



Lost Springs
 (Town)

Santa Fe Trail

Alternant Route

6

7

12

13

11

14

15

22

16

21

17

20

29

T16S

T17S

R4E
 R3E

T17S

T18S

Remingto

24

25

Quail Cree

23

26

Pawne

370th

360th

350th

340th

330th

320th

310th

300th

R5E
 R4E

Xavie

Wagonwhee

Vist

Uplan

Timbe

Sunflowe

**Route of Santa Fe Trail
In Marion county, Kansas
August 2010**

(Trail is located where
indicated by shaded boxes)

Twp	Rng	Sec	NW/4	NE/4	SW/4	SE/4
-----	-----	-----	------	------	------	------

19S	1E	3				
		4				
		8				
		9				
		17				
		18				
		19				

18S	1E	24				
		25				
		26				
		34				
		35				

18S	2E	5				
		7				
		8				
		18				
		19				

17S	2E	24				
		25				
		26				
		27				
		28				
		32				
		33				

17S	3E	19				
		20				
		21				
		22				
		23				
		24				
		25				
		30				

17S	4E	11				
		12				
		14				
		15				
		16				
		17				
		19				
		20				
		21				
		22				
		29				
		30				

**Route of Santa Fe Trail
Marion County, Kansas
August 2010
Coordinates where Trail Crosses County Roads**

Ref. No.	Latitude			Longitude		
	Degrees	Minutes		Degrees	Minutes	
1	38	23.190	N	97	22.324	W
2	38	23.499	N	97	21.624	W
3	38	23.742	N	97	21.212	W
4	38	24.372	N	97	20.758	W
5	38	25.133	N	97	20.113	W
6	38	25.251	N	97	19.729	W
7	38	25.674	N	97	19.236	W
8	38	25.861	N	97	18.999	W
9	38	26.104	N	97	18.596	W
10	38	26.500	N	97	17.882	W
11	38	28.342	N	97	15.678	W
12	38	28.717	N	97	15.355	W
13	38	29.592	N	97	14.920	W
14	38	29.531	N	97	14.777	W
15	38	29.585	N	97	14.630	W
16	38	29.598	N	97	14.584	W
17	38	29.934	N	97	14.595	W
18	38	30.461	N	97	14.384	W
19	38	31.338	N	97	13.989	W
19a	38	31.883	N	97	13.514	W
20	38	32.200	N	97	12.599	W
21	38	32.291	N	97	12.368	W
22	38	32.740	N	97	10.154	W
23	38	33.095	N	97	9.031	W
24	38	33.135	N	97	7.961	W
25	38	33.319	N	97	6.861	W
26	38	33.460	N	97	5.758	W
27	38	33.256	N	97	4.648	W
28	38	33.327	N	97	3.551	W
29	38	33.181	N	97	3.548	W
30	38	33.068	N	97	2.811	W
31	38	32.993	N	97	2.446	W
32	38	32.949	N	97	1.358	W
33	38	33.080	N	97	0.657	W
34	38	33.608	N	97	0.254	W
35	38	33.960	N	96	59.975	W
36	38	33.958	N	97	0.041	W
37	38	33.578	N	97	2.446	W
38	38	33.761	N	97	1.361	W
39	38	33.956	N	97	0.645	W
40	38	34.003	N	97	0.245	W
41	38	34.097	N	96	59.137	W
42	38	34.052	N	96	59.135	W
43	38	33.961	N	96	58.694	W
44	38	33.963	N	96	58.478	W
45	38	34.229	N	96	58.019	W
46	38	34.831	N	96	57.009	W
47	38	34.888	N	96	56.875	W

Datum = WGS84

Note: Locations are approximate because the Trail may be several hundred feet wide in some places.

VITAMIN A



This is primarily good for healthy eyes, organs, skin and hair. This is also an antioxidant. It can be found in fortified milk, liver, cheese, eggs, and fish oil.



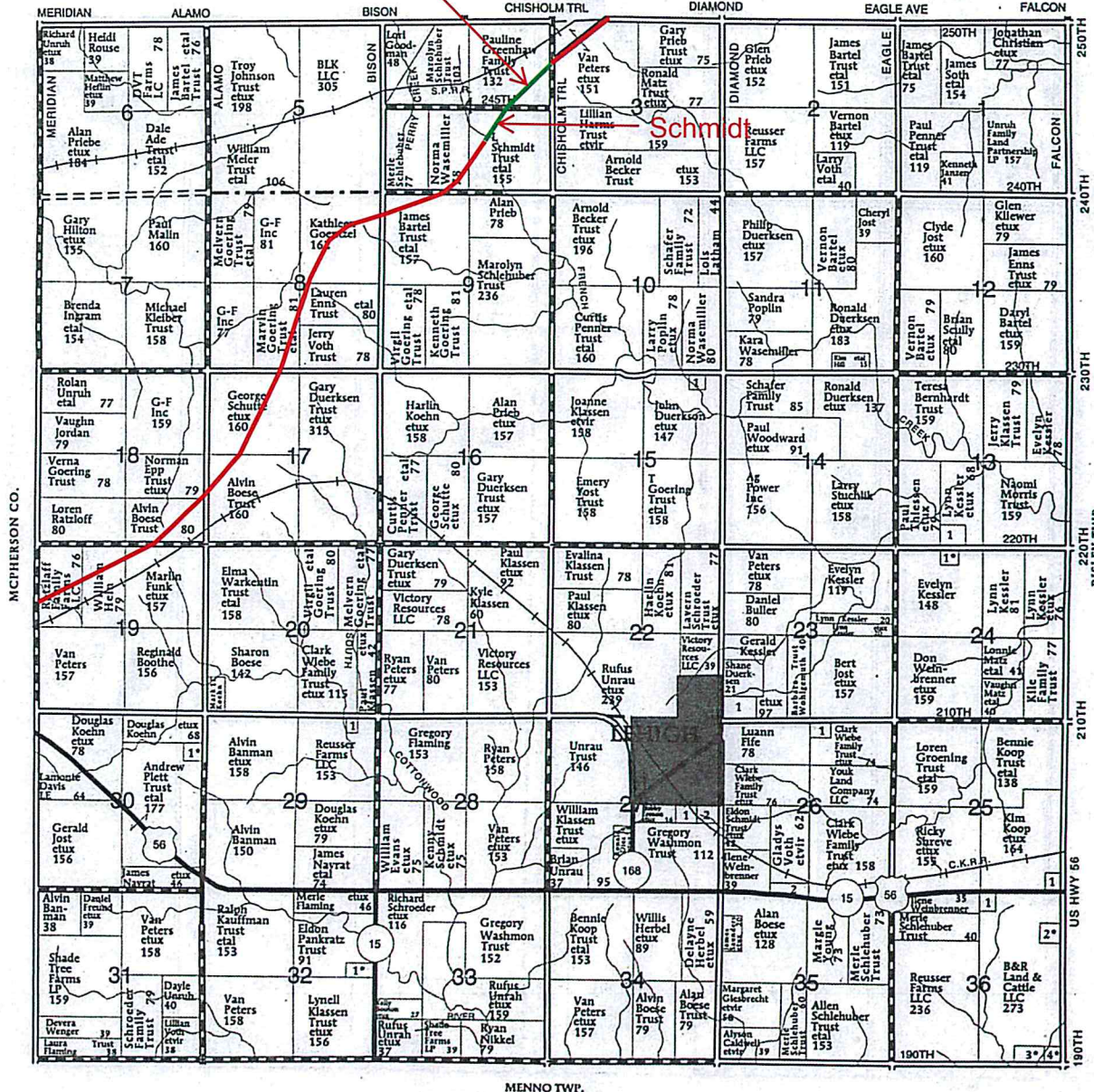
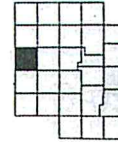
T-19-S

LEHIGH PLAT

R-1-E

Merle Schlehuber

(Landowners)



LEHIGH TOWNSHIP

- SECTION 13**
- 1. Kessler, Evelyn 12
- SECTION 15**
- 1. Funk, Galin 9
- SECTION 23**
- 1. Kessler, Evelyn 15
- SECTION 24**
- 1. Kessler, Lynn 12

SECTION 25

- 1. Schale Trust, Arlene 5
- SECTION 26**
- 1. City of Lehigh 7
- 2. State Highway Commission 16
- SECTION 27**
- 1. Rohleder Trust, Eileen 12

SECTION 28

- 2. Root, Monty 8
- SECTION 29**
- 1. Franzen, Rodney 6
- SECTION 30**
- 1. Koehn, Douglas 10
- SECTION 32**
- 1. Schmidt, Ronald 13
- SECTION 36**
- 1. Schroeder, Sharon 8

SECTION 33

- 2. Isaac, Lyle 11
- 3. Naerbout Jr, Charles 14
- 4. Bartel, Larry 5

Want a "free" extra book?

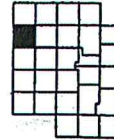
By reviewing township Directory maps for correct information before we publish the next issue, FHP will send you a free book of any county in any state printed by FHP for that year.

Contact our updating dept. at
641-444-3508-ext. 2605 or
 email: amanda.brown@farmandhomepublishers.com

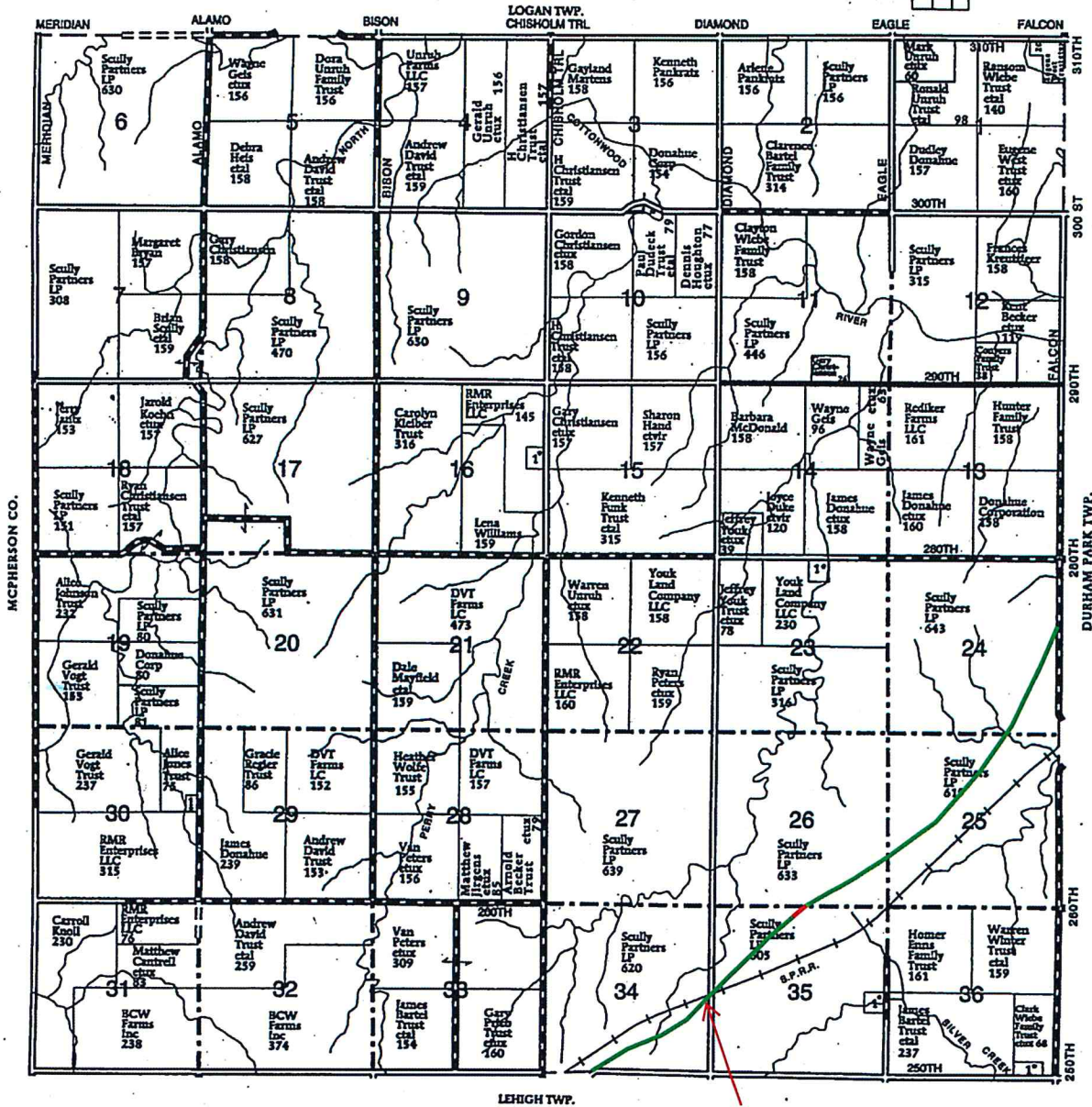
T-18-S

MOORE PLAT

(Landowners)



R-1-E



Sliver of trail NW of
RR/Diamond

MOORE TOWNSHIP
SECTION 18
 1. Platt, Edward 9
SECTION 20
 1. Wiebo, Wayne 9
SECTION 30
 1. Rogers, Brian 6

SECTION 35
 1. Bartel, Stoven 11
SECTION 33
 1. Dyck, Justin 10

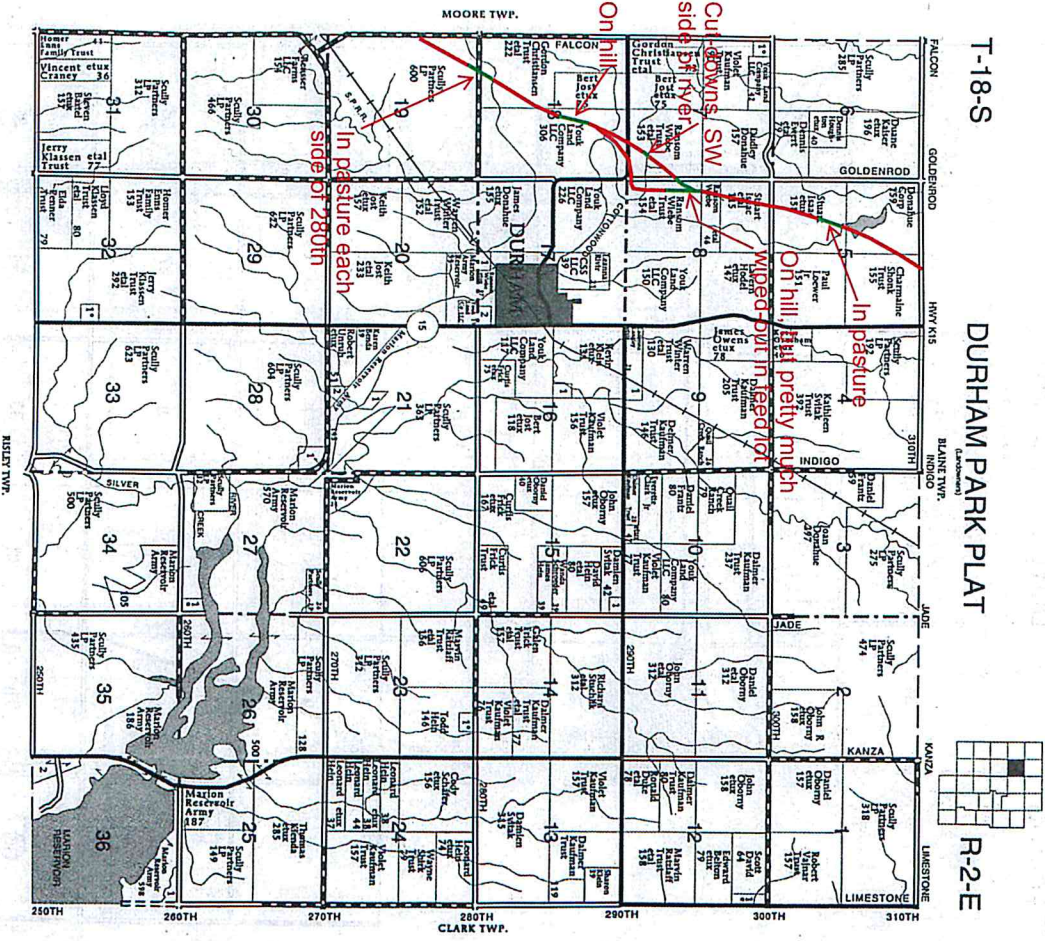
Who Says...Nothing Is Free Anymore?

Receive a "Free" County Plat and Directory
 just for reviewing township directory maps for correct information before we publish the next issue.
 (The Free book may be of any county in any state printed by FHP for that year.)
 Contact FHP UPDATING DEPARTMENT AT 641-444-3508-EXT. 2605
 Or email: amanda.brown@farmandhomepublishers.com

T-18-S

DURHAM PARK PLAT

R-2-E



- DURHAM PARK TOWNSHIP**
- SECTION 15
 1. Kendra, Phillip 16
 - SECTION 16
 1. City of Durham 9
 - SECTION 17
 1. Hand, Sharon 12
 - SECTION 21
 1. Minna, Sheldon 6
 - SECTION 28
 1. Marion Army Reservoir
 - SECTION 32
 1. Leonard 16
 - SECTION 35
 1. Scully Partners LP 10



WE'VE JUST MADE OUR PLAT & DIRECTORIES SO MUCH MORE USER FRIENDLY

FHP
SERVING RURAL AMERICA
FARM & HOME PUBLISHERS®
524 River Ave. North
Belmont, IA 50421
641-444-3508

Electronic Versions Available from Your Sales Representatives or Our Website...

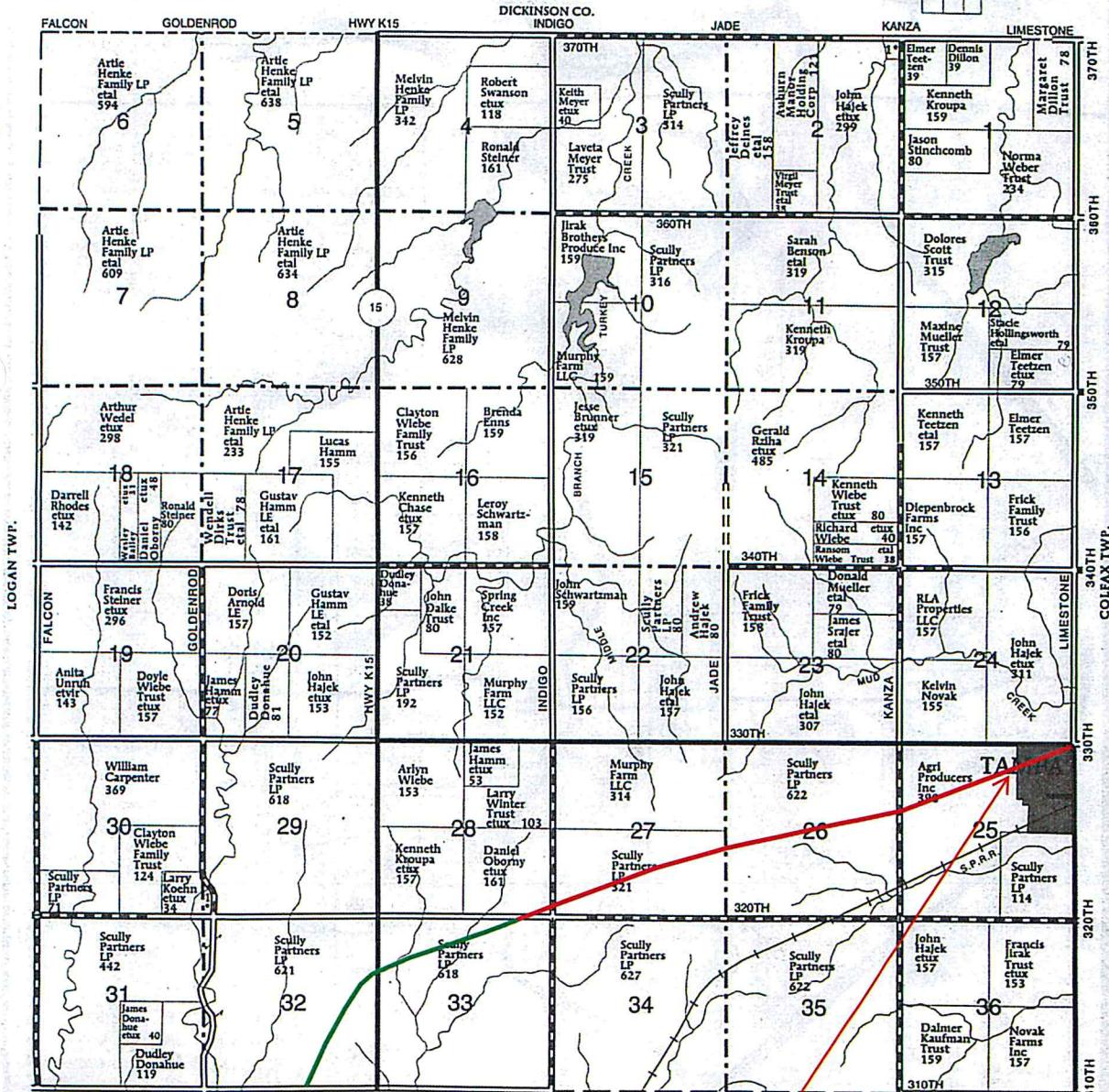
www.farmandhomepublishers.com

- ✓ Flip through the electronic version.
- ✓ Advertisers receive the copyright and licensing of maps until the next publication is printed. You can crop any area of interest for your website, emails or advertising needs.
- ✓ Print pages as needed.
- ✓ Bookmark pages of the publication.
- ✓ Add sticky notes to specific areas of each map or alpha page.
- ✓ View single or double page layout.
- ✓ Use search box to find names of landowners or rural residents listed within each publication.
- ✓ Magnify page for better viewing.
- ✓ Full screen or normal viewing mode.
- ✓ Thumbnail view.
- ✓ Translate information into your desired language for all maps and alpha listings.
- ✓ All advertisers displaying their website will be linked to that website.

T-17-S

BLAINE PLAT

R-2-E



BLAINE TOWNSHIP
SECTION 29

1. Stegeman, Ralph 9
- SECTION 29
1. Koehn, Larry 5

Doug thinks there may be ruts in this area. He will check it out.



VITAMIN C

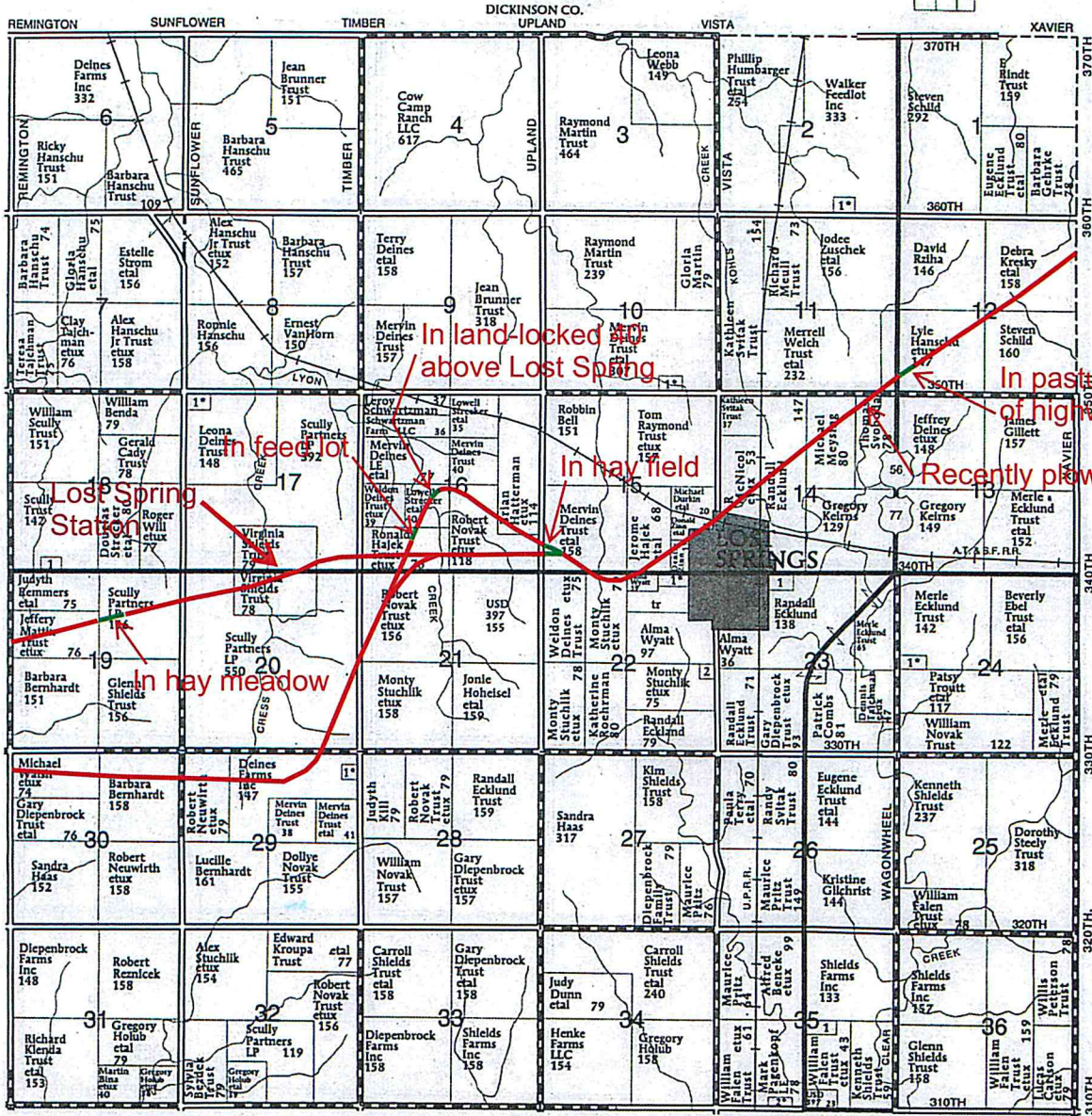
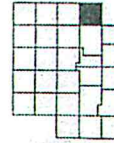
This is a wonderful antioxidant but it also promotes healthy skin and regulates metabolism. It is found in citrus fruits and green vegetables. In some cases cereals may add it to their product.



T-17-S

LOST SPRINGS PLAT

R-4-E



LOST SPRINGS TOWNSHIP

- SECTION 2
1. Zeller, Phillip 9
- SECTION 10
1. Miller, George 8
- SECTION 17
1. Delnes, Terry 9

SECTION 18

- 1. Smith, Gilbert 10
- SECTION 22
1. Lisle, Frank 14
2. Roehman Trust, Merle 5
- SECTION 23
1. City of Lost Springs 13

SECTION 24

- 1. Makovec, Amy 15
- SECTION 29
1. Meek, John 9
- SECTION 35
1. Pagonkopf, Bradley 11
2. Pagonkopf, Bradley 10

