

REPORT OF SURVEY

THE NE<sup>1</sup>/<sub>4</sub> OF THE NE<sup>1</sup>/<sub>4</sub> OF SECTION 15, TOWNSHIP 20 SOUTH, RANGE 4 EAST OF THE 6TH P.M., MARION COUNTY, KANSAS AND A TRACT CONTAINED THEREIN



SCALE: 1" = 300'

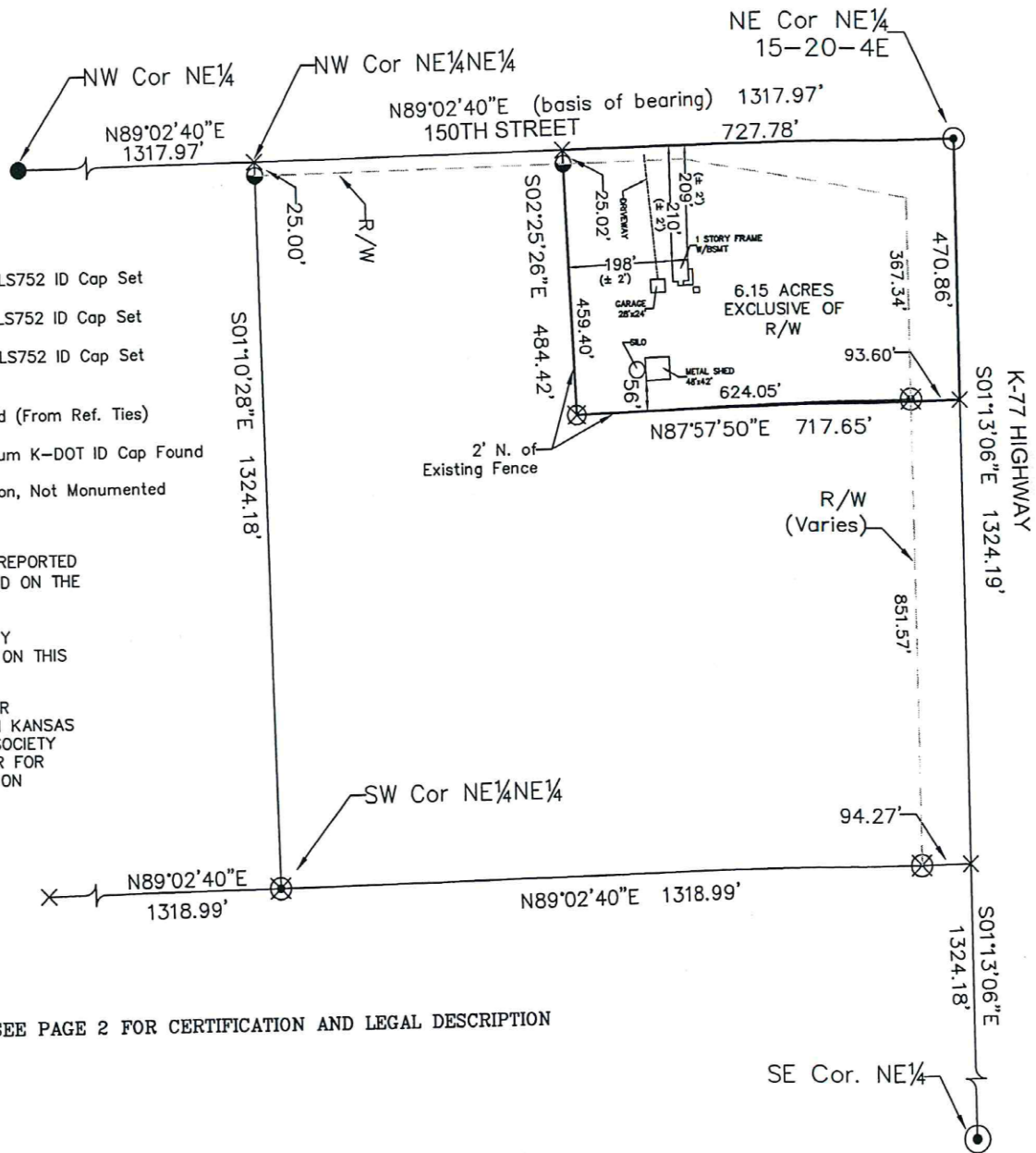
LEGEND:

- ⊗ - 1/2" x 24" Rebar w/LS752 ID Cap Set
- ⊗ - 1/2" x 12" Rebar w/LS752 ID Cap Set
- - 1/2" x 24" Rebar w/LS752 ID Cap Set (Witness Corner)
- - 5/8" Rebar Found (From Ref. Ties)
- ⊙ - 5/8" Rebar w/Alum K-DOT ID Cap Found
- ⊗ - Theoretical Position, Not Monumented

R/W OF 150TH ST. REPORTED TO BE 50', CENTERED ON THE SECTION LINE.

KDOT DESIGN SURVEY COORDINATES USED ON THIS SURVEY.

SEE SECTION CORNER REPORTS FILED WITH KANSAS STATE HISTORICAL SOCIETY & COUNTY ENGINEER FOR MORE INFORMATION ON CORNERS.



SEE PAGE 2 FOR CERTIFICATION AND LEGAL DESCRIPTION

GeoTech, Inc. 1512 W. 6th SUITE I, EMPORIA, KS 66801 (620)342-7491 FAX: (620)342-6722	PROJECT #:	FIELD DATE:	DRAWN BY:	SHEET(S)
	04861-02	12-21-2004	BH	1 OF 2