

SECTION OF SURVEY

TRACTS IN THE NORTHWEST, SOUTHWEST AND SOUTHEAST QUARTERS OF SECTION 33, TOWNSHIP 20 SOUTH, RANGE 4 EAST OF THE 6TH P.M., MARION COUNTY, KANSAS

LEGEND:

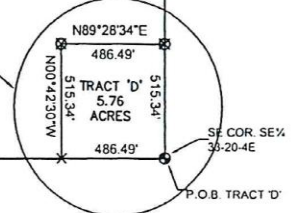
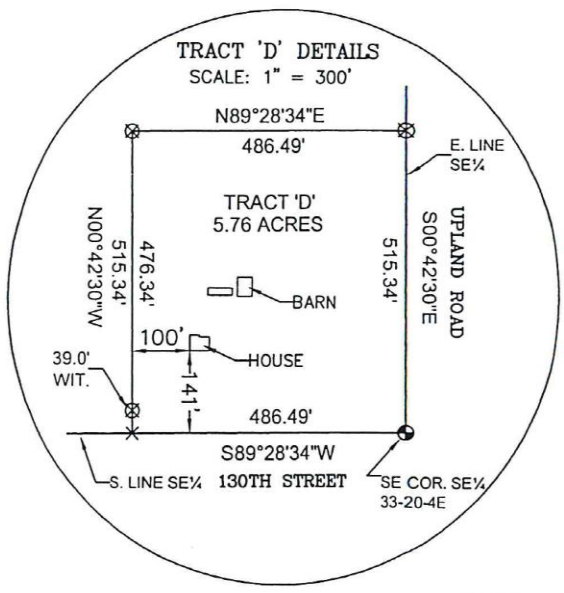
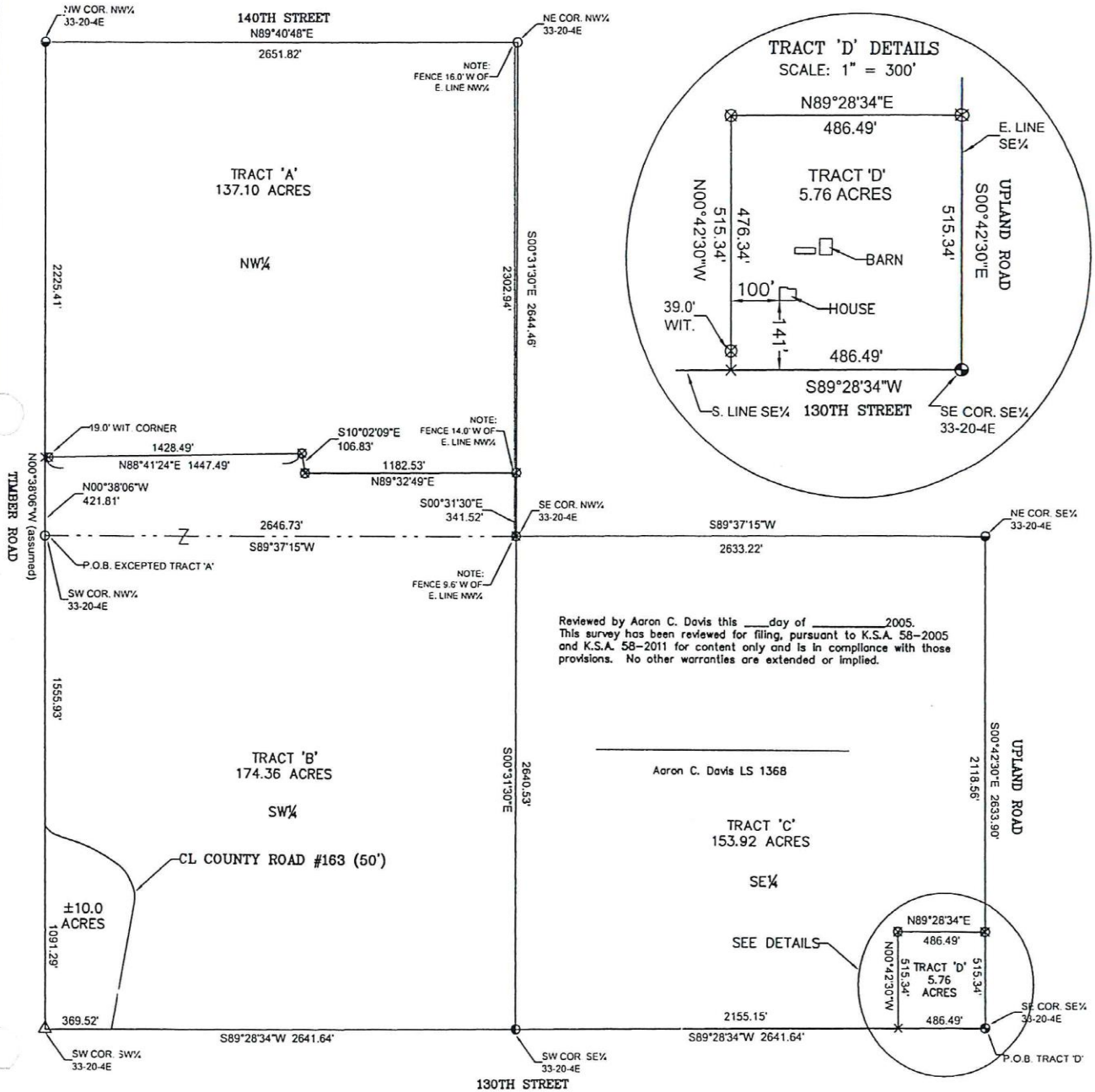
- ⊠ - 1/2"x24" Rebar w/LS752 ID Cap Set
- - 1/2"x12" Rebar w/LS752 ID Cap Found
- - 1/2" Rebar w/LS82 ID Cap Found
- ⊙ - 1/2" Rebar Found
- △ - GLO Stone Found
- ⊕ - Pk nails and LS752 ID Cap in Drill hole Set
- X - Theoretical Position, Not Monumented

ALL DISTANCES ARE MEASURED

SEE PAGE 2 FOR LEGAL DESCRIPTIONS AND CERTIFICATION



SCALE: 1" = 800'



GeoTech, Inc. 1512 W. 6th SUITE I, EMPORIA, KS 66801 (620)342-7491 FAX: (620)342-8722	PROJECT #:	FIELD DATE:	DRAWN BY:	SHEET(S)
	05867-02 05867-02.dwg	9-27-2005	BH	1 OF 1