

TOP OF PROPOSED ALLTEL 198' SELF-SUPPORT TOWER

HEIGHT OF PROPOSED ALLTEL LIGHTENING ROD TO BE 199.94' AGL

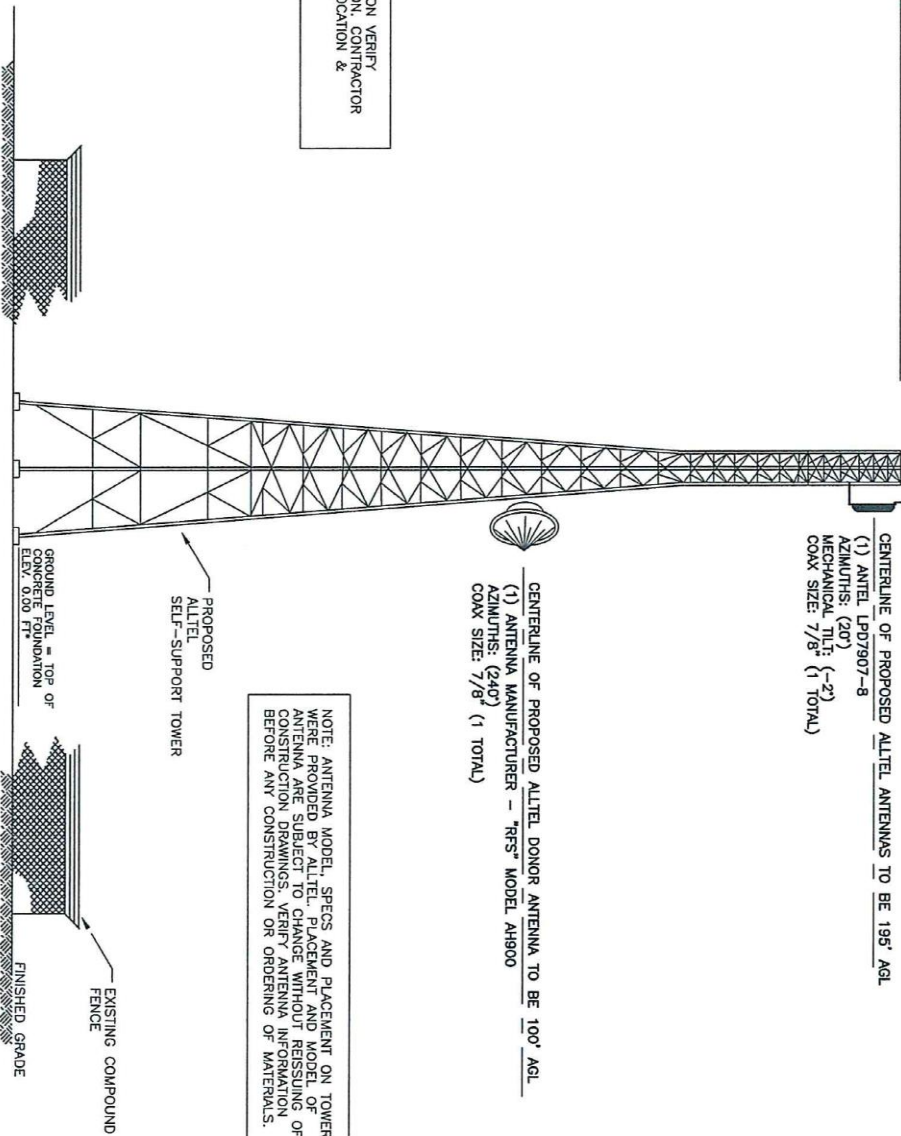
CENTERLINE OF PROPOSED ALLTEL ANTENNAS TO BE 195' AGL
 (1) ANTEL LP07907-8
 AZIMUTHS: (20°)
 MECHANICAL TILT: (-2°)
 COAX SIZE: 7/8" (1 TOTAL)

CENTERLINE OF PROPOSED ALLTEL DONOR ANTENNA TO BE 100' AGL
 (1) ANTENNA MANUFACTURER - "RFS" MODEL AH900
 AZIMUTHS: (240°)
 COAX SIZE: 7/8" (1 TOTAL)

NOTE: PRIOR TO ANY CONSTRUCTION VERIFY ALL DATA & ANTENNA ORIENTATION. CONTRACTOR IS RESPONSIBLE FOR PROPER LOCATION & ORIENTATION.

NOTE: ANTENNA MODEL, SPECS AND PLACEMENT ON TOWER MUST BE PROVIDED BY THE MANUFACTURER. MODEL OF ANTENNA ARE SUBJECT TO CHANGE WITHOUT REISSUE OF CONSTRUCTION DRAWINGS. VERIFY ANTENNA INFORMATION BEFORE ANY CONSTRUCTION OR ORDERING OF MATERIALS.

NOTE: THE TOWER DRAWING IS ONLY A GRAPHIC REPRESENTATION OF THE STRUCTURE TO SHOW ANTENNA MOUNTING ELEVATION. THE ACTUAL TOWER IN THE FIELD MAY VARY.



TOWER ELEVATION VIEW

(SCALE: NONE)

* ELEVATIONS SHOWN ARE AS MEASURED FROM TOP OF CONCRETE FOUNDATION

Dumas & Associates, Inc.

Consulting Engineers
 404 Fairfield Street
 West Monroe, Louisiana 71291
 318.587.7013
 dumas@bayou.com

DESIGNED	N/A	SCALE	N/A	CHECKED	D.D.
DRAWN	D.D.	PROJECT NUMBER	0208-01E	DATE	09/04/07

PROPOSED
 GOESSEL REPEATER
 ALAMO ROAD
 GOESSEL, KANSAS
 TOWER SITE
 SITUATED ON
 LAND OWNED BY
 FLOYD NICKEL TRUST ETAL
 ALLTEL PROJECT
 NO. 891360203



SHEET NUMBER
C-4

TOWER PROFILE