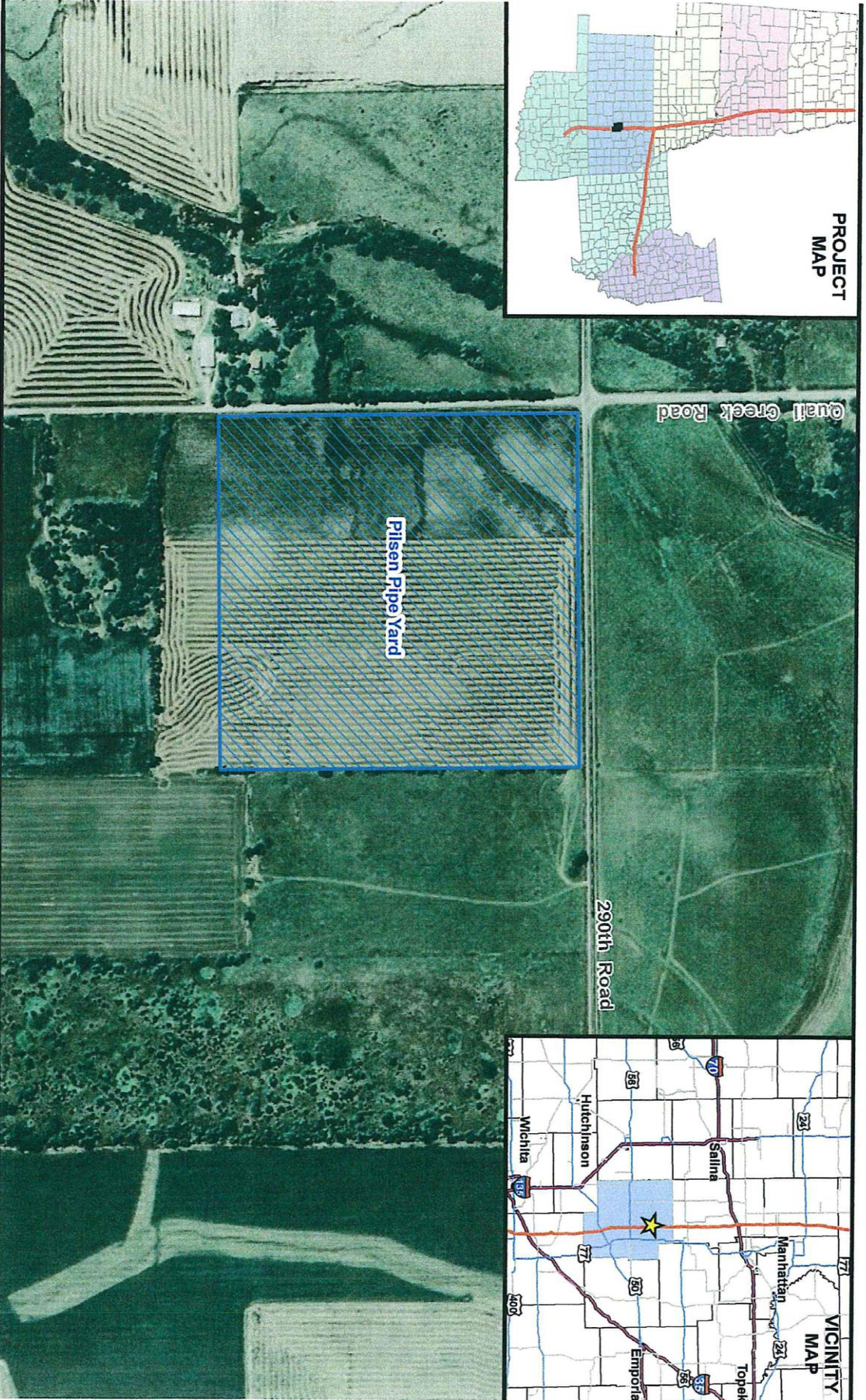
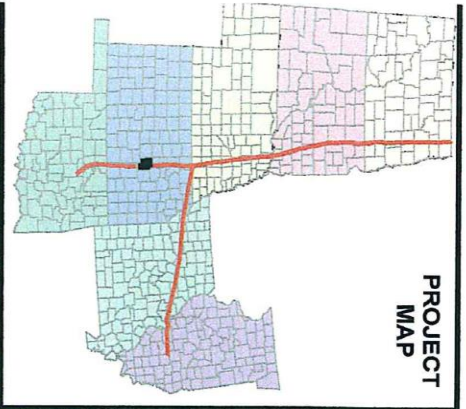


**PROJECT
MAP**



**VICINITY
MAP**



Marion County, Kansas
T18S R3E Sec 13
Pilsen Pipe Yard



NOTE:
Yard Area: 40 Acres
Current Land Use:
Agricultural



PREPARED BY:
UNIVERSAL ENSCO, INC.



TransCanada
In business to deliver
KEYSTONE PIPELINE PROJECT

PROJECT:	SCALE	DRAWN BY	DATE	DWG #
9348	1=6,000	LKS	09/19/2009	S-PY-CV/40.0 REV # 0